



# Komatsu Apprenticeship Program

Make a Smart Move

Smart Technology • Passionate People • Smart Move



1300 566 287 | [komatsu.com.au](http://komatsu.com.au)  
0800 566 2878 | [komatsu.co.nz](http://komatsu.co.nz)

**KOMATSU**



Komatsu offers a range of apprentice streams in locations across Australia and New Zealand. The programs commence in January each year with advertising for the roles occurring in July.

### As an apprentice, you will:

- » Learn valuable, nationally recognised job skills and qualifications
- » Work with state-of-the-art equipment of an OEM company
- » Learn while earning an income
- » Be supported by a dedicated Apprentice technical capability team
- » Learn business and customer relations skills
- » Be provided with mental health awareness and resilience training
- » Opportunity to rotate amongst the business and departments, for broader learning experience

## Smart move for Your Future

With the opportunities that flow from valuable skills developed in a global leading company that invests in people, your future can be an adventure.

Komatsu Apprentices gain technical, life, and business skills that stay with them forever.

They join a team that leads the world in smart earthmoving machinery - with exciting career paths and endless possibilities.

### Bring your Energy, Your Desire to Learn

We will team you with the **best people, best technology, and the best training.** That's why Komatsu Apprentice Development is a smart move.





# What is a Komatsu Apprenticeship?

Komatsu Apprentices Development is a learning pathway to a formal qualification while training and working in a real job, with a real boss for a real wage.

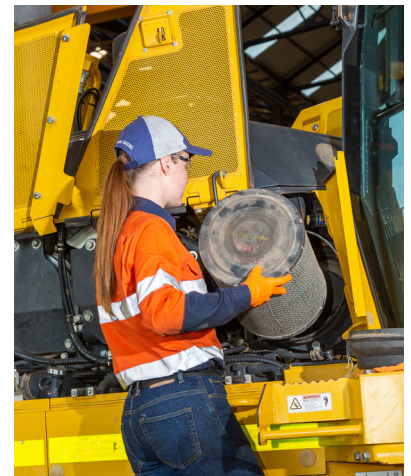
At Komatsu, you are a permanent employee and the apprentice is the basis for further education, training and development and the first step to a rewarding career. In your apprenticeship, you will:

- » Combine formal training from a Registered Training Organisation (RTO) with workplace-based training
- » Access Komatsu-specific training programs
- » Have a choice of location throughout Australia or New Zealand
- » Get paid while learning.

## How to apply for a Komatsu Apprenticeship

Apprentice recruitment is a step by step process designed to ensure that you're the right fit for the job and that it is the right job for you. The selection process could involve online application, phone interview, job related testing and interview as well as pre employment checks and a medical. All applicants are kept informed during the process and each stage you progress to will be explained to you.

Komatsu advertises for apprentices in July each year on Seek and information on the program is always available on the Careers Page on [komatsu.com.au](http://komatsu.com.au) or [komatsu.co.nz](http://komatsu.co.nz). Current employees and external applicants may apply. As Komatsu is an equal opportunity employer and values workforce diversity, people of all ages, genders and backgrounds are encouraged to apply.





# Our Apprenticeship Streams

## Plant Mechanic



Plant Mechanics are trained to undertake inspections, repair, rebuilds, modifications and routine maintenance across the Komatsu product range.

## Boilermaker/Welder



A Boilermaker / Welder will be trained in cutting, shaping, welding metal and repairs or new fabricated work to panels, chassis or undercarriage on the Komatsu product.

## Auto Electrician



The Auto Electrician will learn the trade on 12-24 volt systems to install, maintain and repair electrical wiring and electronic components and Air conditioning maintenance and repairs on the Komatsu equipment.

## Mechanical or Electrical Fitter



Mechanical or Electrical Fitters will learn competencies to manufacture, fit, assemble, erect, operate, test, fault find, alter and repair components within a plant in Komatsu machinery.



## Fitter Turner



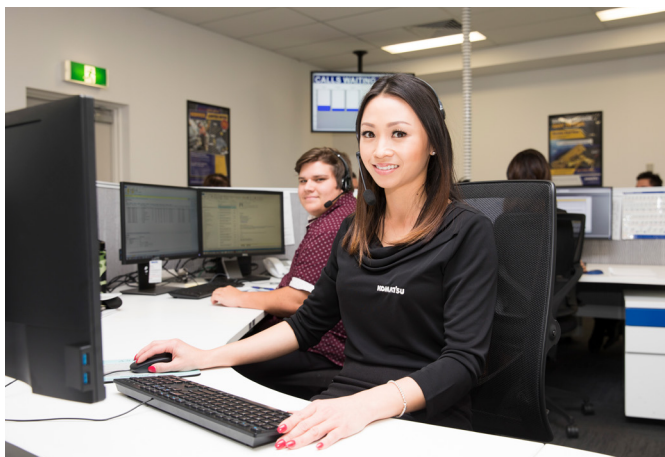
A Fitter and Turner will learn the trade to fabricate industrial tools, components and products from metal. Working to a set of specifications, operating tools and machines to grind, mill and shape raw materials into the specified form, then assembling the final.

## Electrician



An Electrician will work on low and high voltage equipment to design, assemble, install, test, commission, diagnose, maintain and repair electrical networks, systems, circuits, equipment, components, appliances and facilities for the Komatsu product.

## Automotive Sales



Auto Sales involves interpreting what Komatsu customers are looking for with Spare Parts specific to a model. Duties will include Identifying parts and components. Sales and customer service.

**Apprenticeships on offer in 2021 may change in line with changing business needs.**



# What do our apprentices think

## ***Andrew, 2nd Year Plant Mechanic Apprentice:***

"I am enjoying every piece of the apprenticeship. I love going to work and often find myself bored as on weekends when there is no work. I learn something new every day and crave the challenge of every job that lies ahead."

## ***Alex, 1st year Electrician Apprentice:***

"I chose an apprenticeship with Komatsu as I knew I was joining a highly respectable industry leading company and receiving a high degree of OEM education, learning from the best technicians along the duration of my apprenticeship to become the best technician I can be and a proud member of the Komatsu family."

## ***Layla, 1st Year Plant Mechanic Apprentice:***

"Komatsu's apprenticeship program is really good with what I have experienced so far. I know others in the trade that don't get as many opportunities to learn as us. Our learning so far has been a really good introduction to the company and there's so much more to learn in the future."

At the branch, we have been buddied up with qualified technicians. This has been very helpful with starting out in a new company and when working on machines as there's someone there who you can constantly pick knowledge off which I feel is a more effective way to learn and make you more confident with your work."





# People Powered Technology

Since 1921, Komatsu has stood for unrivalled quality and reliability. Our enduring global success stems from the principles of our founder, Meitaro Takeuchi, who envisioned a sustainable future built through quality, technological innovation, globalisation and talent development.

These defining principles, along with an emphasis on safety, compliance and social responsibility, remain part of our Komatsu DNA.

Today, Komatsu is recognised as a world leader in the technology behind state-of-the-art earthmoving, mining, construction and utility equipment. But we want to be more than that. Our vision is to be an indispensable partner to our customers through our brand philosophy.

For us, the key to achieving this is by putting our employees at the heart of our business, because we know that to sustainably grow Komatsu we need the trust of our customers – trust which can only be gained through engaged employees who are both valued and respected.

At Komatsu, we know a lot about big machines, from their tiniest bolt, to the most intelligent operating systems. But above all, we realise that there's one thing that makes a good machine a great one: people. People power our ideas, they drive our development, they stand behind the innovations that lead to advances like autonomous machines and hybrid technology.

At Komatsu, we are 'people powered'. Make a smart move now and join the Komatsu family by applying to the apprenticeship program.





# Apply Now

If you are eager to learn more about Komatsu's Apprenticeship Program and want to kickstart your career, visit

<https://www.komatsu.com.au/company/careers-with-komatsu/apprentice-program>



1300 566 287 | [komatsu.com.au](https://www.komatsu.com.au)  
0800 566 2878 | [komatsu.co.nz](https://www.komatsu.co.nz)

# KOMATSU