



Komatsu Training Academy

Nationally Recognised Training

Course Guide



1300 566 287 | komatsu.com.au

RTO No: 90996

KOMATSU
Creating value together



Table of Contents

Komatsu Training Academy Capability Statement	4 - 5
RII30820 Certificate III in Civil Construction Plant Operations	6-7
AUR20220 Certificate II in Automotive Air Conditioning Technology	8-9
AUR30320 Certificate III in Automotive Electrical Technology	10-11
AUR31220 Certificate III in Mobile Plant Technology	12-13
MEM31922 Certificate III in Engineering - Fabrication Trade	14-15
Bridge it with Komatsu Training Academy short courses	16
RIISAM301F Test operational functions of vehicles and equipment	17
HLTAID009 and HLTAID011 Provide cardiopulmonary resuscitation and Provide first aid	18
UEERL0007 Disconnect-reconnect 3.3 kV electric propulsion components of self-propelled earth moving vehicles	20
CPCCWHS1001 Prepare to work safely in the construction industry (white card)	21
RIIWHS202E Enter and work in confined spaces	22
RIIWHS204E Work safely at heights	23
TLILIC0003 Licence to operate a forklift truck	24
52844WA Course in Working Effectively in an Automated Workplace	25
BSB50420 Diploma of Leadership & Management	26

Komatsu Training Academy

Capability statement



People-powered training & development services

Komatsu Training Academy is a Registered Training Organisation (RTO), which assists its construction, quarry and mining customers by delivering nationally recognised and customised training by a variety of methodologies e.g. online, on-site, at customers' premises or at a Komatsu dedicated training facility. Offerings include a mix of customised onsite, nationally recognised qualifications and units, along with purpose-designed operator, technical and leadership training.

The Komatsu Training Academy provides Komatsu machine users with appropriate training in service and repair technology as an essential part of our product support capability designed to improve productivity and lower the cost of ownership. As an industry leader we strive to deliver safe and innovative solutions that best meet your needs and expectations.

Our team of specialist, industry-qualified trainers deliver a broad spectrum of competency and skill-based development programs, customised to your business and targeted to meet your specific industry needs. These programs include leadership and management training, operator skill proficiency development and customised technical training. No matter what your training needs, our industry-specific tailored courses will upskill your team, upskill your workforce – ensuring you are best equipped to handle the ever changing technical and technological challenges facing the industries we operate within now and into the future.

Who we are

Komatsu Australia is unique in being the only national distributor across the construction, quarrying and mining industries able to provide nationally recognised, customised, in-depth training tools for customers targeted to not only increase productivity, but also to improve efficiency and profitability.

In addition to our extensive range of training courses, we can also custom deliver productivity improvement initiatives for our construction, quarry and mining customers suitable for any size site or project.

Due to our extensive industry consultation and experience, we have assisted some of the industry's leading organisations to be able to solve complex issues, achieve measurably improved results and build leadership capabilities towards improvements in both productivity and performance.

Benefits to your business

As an industry specific RTO, you can be assured that Komatsu Training Academy delivers the very best training from experts who not only know this industry intimately, but who are passionately committed to achieving the right outcomes for you and your workforce.

Komatsu has established a reputation for products that combine innovation and technological advances, with industry-leading levels of reliability, durability and productivity and is one of the largest training organisations of apprentice Diesel Fitters, Boiler Makers and Auto Electrical trades persons in Australia.

We choose to do this, by delivering people powered technology trained technicians to ensure our customers experience the best possible Komatsu ownership and are involved every step of the way.

In today's labour market, where a shortage of experienced service technicians and skilled operators is impacting on the industries in which we operate and serve, all too often training has become focused on churning out numbers of apprentices, aiming more at quantity rather than at quality outcomes. At Komatsu Training Academy, we focus on what is really needed: up-skilling for production improvement, preventive maintenance and safety.

We believe that the difference between a key technician or operator who is merely competent compared with one who is truly proficient at their job, can translate into significant benefits to your bottom line as well as having a more engaged and committed loyal workforce. We understand the challenges of your specific operating environment, and how to work with you to get the very best from your equipment and your management, technical and operational teams.

At Komatsu Training Academy, we understand the difficulties faced by our customers across highly diverse industry sectors – so we adapt delivery of our training to ensure we achieve the best outcomes for your investment.

When you need expert training for your people, Komatsu Training Academy is right there with you.



Skills packages

At Komatsu Training Academy, we recognise that the first step in ensuring safe, productive and profitable worksites is to have plant operators and service technicians who can safely and competently operate and service their machines, then build on these core skills to develop into highly proficient professionals.

We offer a range of training and skills development courses, from industry-accredited nationally recognised machine-specific courses, through to specialist courses that ensure the highest levels of proficiency and professionalism – and capable of delivering measurable and sustainable improvements in productivity, cost reduction, machine reliability and safety.

Operator and technician training courses available through Komatsu Training Academy cover a variety of mining, construction and utility machines including backhoe/loaders, dozers, shovels, crushers, dump trucks, excavators (conventional and hybrid), graders and wheel loaders, as well as general systems and technologies.

In addition, Komatsu Training Academy can develop and tailor any training program to suit customers' specific requirements. Contact us to discuss how we can customise your training to meet your specific business objectives.

Our training facilities

Komatsu Training Academy boast two purpose built education centres - located in Brisbane and Perth. Our facilities offer a highly interactive and technologically advanced learning environments, with spacious classrooms and state-of-the-art equipment.

Additionally, our workshop labs are specifically designed to deliver hands-on training for mining and construction class machines, ensuring that students gain practical skills and experience.

Our training facilities also incorporate a number of simulators, providing the ability for both novice and experienced operators to safely learn on a range of machines - from a small utility machine, right up to an ultra-class mining machine.

Our innovative and futuristic training facilities assist with delivering a platinum level of training, helping to create career development opportunities for current and future generations. These training centres are an important element within our total customer satisfaction experience, by ensuring we offer the best trained Original Equipment Manufacturer (OEM) support in the industry.

Certificate III in Civil Construction Plant Operations



This nationally recognised qualification is for individuals wishing to develop or enhance their proficiency as a plant operator in the civil construction industry. Skilled plant operators are in strong demand across Australia as private contractors, plant hirers, and skilled operators within local government councils, quarrying and mining, and other relevant resource industry sectors.

Komatsu Training Academy offers a range of courses and units to build on your current skills, or get recognised for your past industry experience, across a wide range of operator applications and work areas including: infrastructure - related projects (subdivisions, bridge works, railways, harbours, sewerage and drainage, electrical infrastructure, pipeline and recreation works), bulk earthworks, detail excavation, and the extractive industries (quarrying and mining).

Course costs

Students enrolling via an apprenticeship pathway may be eligible for subsidised training. Eligibility and student contribution fees vary state by state. Please contact Komatsu Training Academy for further information.

Learning outcomes

- » Prepare machinery for the day's operation
- » Identify and report on hazards related to plant and prepare work requirements
- » Identify underground services
- » Clean, lubricate and refuel machines
- » Perform minor repairs and adjustments, as and when required
- » Apply and work within safety requirements while meeting environmental requirements as part of the operations
- » Work from drawings and specifications under direction from supervisors
- » Operate plant equipment and all attachments in varying construction environments.

RII30820 Certificate III in Civil Construction Plant Operations provides training in both theory and practical elements to prepare you for a career as a plant operator.

While there are no formal entry requirements for this qualification, those enrolling with Komatsu Training Academy must be employed in a relevant industry sector and have access to the required equipment and practical work scope to fulfil the requirements of this course.

Duration

Up to 3 years.

Course duration may vary depending on your prior knowledge, skills and experience. If studying via an apprenticeship pathway this qualification is delivered on the worksite over a three (3) year period.

Training locations

- » **Approved customer sites.**

Recognition of prior learning (RPL)

If you are currently working in the civil construction industry and have more than 3 years' experience, please talk to a Komatsu Training Academy representative about RPL. Our specialist trainers can develop a tailored training plan for you based on your existing skills, knowledge and experience.

Resources required

Please note participants will be provided with all learning and assessment material. Participants will require their personal protective equipment (PPE) relevant to their workplace policy and procedures for undertaking practical activities.

Timetable

This qualification is delivered in the workplace, either via an apprenticeship pathway, or through commercial arrangements negotiated with employers. Training can occur in workplaces throughout Australia, although minimum student numbers will apply in some locations. Please contact Komatsu Training Academy to discuss training solutions for your organisation.

The nominal term for a full-time plant operator apprentice is up to three years (36 months). The training duration for course participants not entering via an apprenticeship pathway will depend on the existing skill and experience levels of the learners.

elivery is generally conducted during standard work hours (one full day) for the student in the workplace, on an approximate four-to-six week cycle. Details will be negotiated between Komatsu and the employer.

Entry requirements

Eligible participants are normally employed as a plant operator who works within the civil construction industry.

Komatsu Training Academy recognises that not all participants will have the same level of ability in relation to reading, writing and performing calculations. All participants enrolling into a nationally recognised qualification will undertake a Language, Literacy and Numeracy (LLN) assessment, which is conducted online via LLN Robot. LLN Robot is an online system that combines Australian Core Skills Framework (ACSF) Testing, Course Profiling and LLN Support.

Course contents

The successful achievement of this qualification requires completion of 20 units in total, including 15 core units and 5 elective units of which:

- » At least one (1) must be chosen from Group A
- » At least two (2) must be chosen from Group B
- » No more than two (2) may be chosen from Group C
- » No more than one (1) may be chosen from elsewhere within this training package, or from another endorsed training package, or from an accredited course
- » If you are unsure of what elective units are right for you please discuss this in more detail with Komatsu Training Academy on 1300 390 377.

Core units

RIIBEF201E	Plan and organise work
RIICCM201E	Carry out measurements and calculations
RIICCM202E	Identify, locate and protect underground services
RIICCM203E	Read and interpret plans and job specifications
RIICCM205F	Carry out manual excavation
RIICCM206E	Support plan operations
RIICCM207E	Spread and compact materials manually
RIICCM208E	Carry out basic levelling
RIICOM201E	Communicate in the workplace
RIIRIS301E	Apply risk management processes
RIISAM201E	Handle resources and infrastructure materials and safely dispose of nontoxic materials
RIISAM203E	Use hand and power tools
RIISAM204E	Operate small plant and equipment
RIIWHS201E	Work safely and follow WHS policies and procedures
RIIWMG203E	Drain and dewater civil construction sites

Group A electives

RIIMPO318F	Conduct civil construction skid steer loader operations
RIIMPO337E	Conduct articulated haul truck operations
RIIMPO320F	Conduct civil construction excavator operations
RIIMPO321F	Conduct civil construction wheel front end loader operations

Group B electives

RIIVEH304E	Conduct tip truck operations
RIIMP0317F	Conduct tip roller operations
RIIMP0326E	Conduct tip water vehicle operations

Group C electives

RIICCM210E	Install trench support
RIIHAN308F	Load and unload plant
CPCCWHS2001	Apply WHS requirement policies & procedures in construction industry
HLTTAID0011	Provide first aid

Certificate II in Automotive Air Conditioning Technology



This qualification covers the skills and knowledge required to perform a range of tasks related to servicing and repairing air conditioning components and systems of cars and heavy vehicles within an automotive service and repair business. This course is aimed at people with previous experience/qualified in the automotive industry looking to obtain an air conditioning licence. The completion of this qualification enables an individual to apply for an AAC02 - Refrigerant handling licence - qualified persons (Automotive air conditioning licence: 2 years).

Course costs

Course costs will vary depending on the electives chosen. Please contact Komatsu Training Academy for further information.

Learning outcomes

This qualification is designed to provide an industry recognised skills profile related to trade work as a licenced Air conditioning technician.

You will be able to work in the automotive industry servicing heating, ventilation, and air conditioning systems; retrofitting, modifying, diagnosing and repairing faults. You can do this course as a standalone course or gain this qualification alongside one of our Automotive apprenticeships.

Duration

Up to 6 months.

Course duration may vary depending on your prior knowledge, skills, and experience.

Training locations

- » Brisbane, QLD
- » Perth, WA

Recognition of prior learning (RPL)

If you are currently working in the automotive electrical service industry and have more than 3 years' experience, please talk to a Komatsu Training Academy representative about RPL. Our specialist trainers can develop a tailored training plan for you based on your existing skills, knowledge and experience.

Resources required

Please note participants will be provided with all learning and assessment material. Participants will require their personal protective equipment (PPE) relevant to their workplace policy and procedures for undertaking practical activities.

Prerequisite

Trade Certificate (Automotive) or current Automotive Apprentice (at least completing the third year).

A refrigeration and air conditioning (RAC) trainee licence is required for a person who is handling refrigerant while undertaking training and/or assessment leading to a National Quality Council endorsed qualification in refrigeration and/or air conditioning.

Entry requirements

This course is aimed at people with previous experience/qualified in the automotive industry looking to obtain an air conditioning licence. The completion of this qualification enables an individual to apply for an AAC02 - Refrigerant handling licence - qualified persons (Automotive air conditioning licence: 2 years).

Komatsu Training Academy recognises that not all participants will have the same level of ability in relation to reading, writing and performing calculations. All participants enrolling into a nationally recognised qualification will undertake a Language, Literacy and Numeracy (LLN) assessment, which is conducted online via LLN Robot. LLN Robot is an online system that combines Australian Core Skills Framework (ACSF) Testing, Course Profiling and LLN Support.

Important information

Upon successful completion, you will be able to apply for your Automotive Refrigerant Handling Licence from the Australian Refrigerant Council. This will allow you to work on air-conditioning equipment in light, heavy and commercial vehicles.

Other costs for consideration: Trainee Licence through the Australian Refrigeration Council www.arctick.org

How to apply and enrol

If you currently have existing knowledge, skills and experience, then you may be eligible for Credit Transfers or RPL. Enrolments can be made directly through the Komatsu Training Academy.

Course structure

Total number of units = 13

6 core units, plus

7 elective units, of which:

- » all 7 units may be from the elective units listed below
- » up to 3 units may be from a Certificate I qualification or above in this Training Package or another endorsed Training Package or accredited course.

Elective units chosen must be relevant to the work environment and the qualification, maintain the overall integrity of the AQF alignment, not duplicate the outcome of another unit chosen for the qualification, and contribute to a valid vocational outcome

Core units

AURAEA002	Follow environmental and sustainability best practice in an automotive workplace
AURASA102	Follow safe working practices in an automotive workplace
AURETR112	Test and repair basic electrical circuits
AURETU103	Service air conditioning and HVAC systems
AURETU104	Diagnose and repair air conditioning and HVAC systems
AURTTA118	Develop and carry out diagnostic test procedures

Elective units

AURTTA104	Carry out servicing operations
AURTTC103	Diagnose and repair cooling systems
AURTTK102	Use and maintain tools and equipment in an automotive workplace
AURTTE104	Inspect and service engines
AURETR011	Install basic ancillary electrical systems and components



AUR30320

Certificate III in Automotive Electrical Technology



This qualification will provide you with the skills and knowledge used by tradespeople who service, diagnose and repair electrical systems and components in vehicles in the automotive electrical service and repair industry.

Course costs

Students enrolling via an apprenticeship pathway may be eligible for subsidised training. Eligibility and student contribution fees vary state by state. Please contact Komatsu Training Academy for further information.

Learning outcomes

This qualification is designed to provide an industry recognised skills profile related to trade work as an Automotive Electrical Technology Tradesperson. Skills development is usually undertaken through an Australian Apprenticeship arrangement where the mix of on and off-the-job training is specified in the Training Plan associated with the Contract of Training between the employer and apprentice.

AUR30320 Certificate III in Automotive Electrical Technology gives you the training you need to start your career as a qualified automotive (electrical technology) tradesperson. You will learn how to service, diagnose and repair vehicle electrical and electronic systems and components. This qualification provides great scope for future work in both the automotive electrics and automotive technology related industries.

Duration

Up to 4 years.

Course duration may vary depending on your prior knowledge, skills and experience. If studying via an apprenticeship pathway this qualification is delivered face to face over a four (4) year period.

Training locations

- » Brisbane, QLD
- » Perth, WA

Recognition of prior learning (RPL)

If you are currently working in the automotive electrical service industry and have more than 3 years' experience, please talk to a Komatsu Training Academy representative about RPL. Our specialist trainers can develop a tailored training plan for you based on your existing skills, knowledge and experience.

Resources required

Please note participants will be provided with all learning and assessment material. Participants will require their personal protective equipment (PPE) relevant to their workplace policy and procedures for undertaking practical activities.

Entry requirements

Eligible participants are normally employed by an employer who works within the Automotive Electrical Service, Repair or relevant industry that would be suitable for an occupation.

Komatsu Training Academy recognises that not all participants will have the same level of ability in relation to reading, writing and performing calculations. All participants enrolling into a nationally recognised qualification will undertake a Language, Literacy and Numeracy (LLN) assessment, which is conducted online via LLN Robot. LLN Robot is an online system that combines Australian Core Skills Framework (ACSF) Testing, Course Profiling and LLN Support.

How to apply and enrol

Obtain an apprenticeship in AUR30320. Alternatively, if you have current existing knowledge, skills and experience, then complete a RPL Application. Enrolments can be made directly through the Komatsu Training Academy.

Course contents

Total number of units = 32

21 core units, plus

11 elective units, of which:

- » all 11 units may be from the elective units listed below
- » up to 6 units may be from a Certificate II qualification or above in this Training Package or another endorsed Training Package or accredited course.

Elective units must be relevant to the work environment and the qualification, maintain the overall integrity of the AQF alignment, not duplicate the outcome of another unit for the qualification, and contribute to a valid vocational outcome.

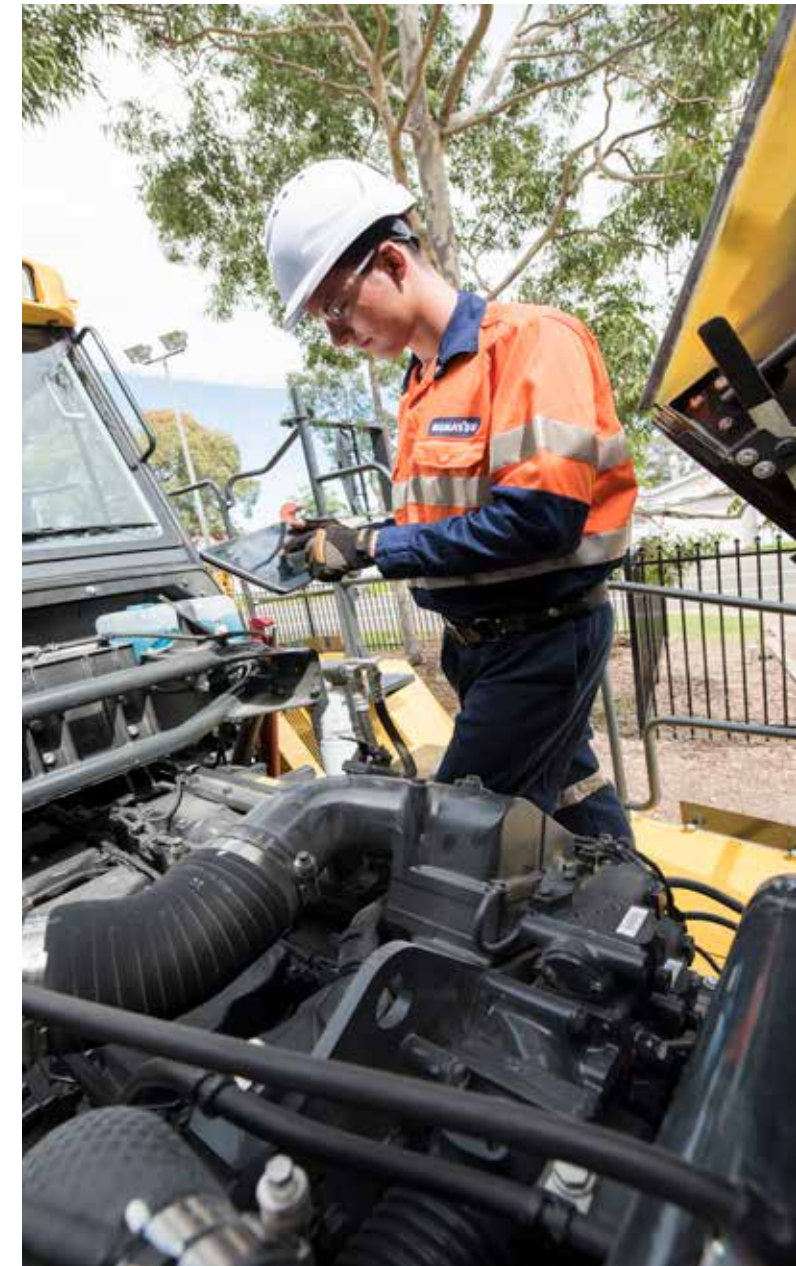
Year 1

AURAEA002	Follow environmental and sustainability best practice in an automotive workplace
AURASA102	Follow safe working practices in an automotive workplace
AURETK002	Use and maintain electrical test equipment in an automotive workplace
AURETR006	Solder electrical wiring and circuits
AURETR007	Apply knowledge of automotive electrical circuits and wiring systems
AURETR009	Install vehicle lighting and wiring systems
AURETR010	Repair wiring harnesses and looms
AURETR027	Install ancillary electronic systems and components
AURETR112	Test and repair basic electrical circuits
AURETR123	Diagnose and repair spark ignition engine management systems
AURETR124	Diagnose and repair compression ignition engine management systems
AURETR125	Test, charge and replace batteries and jump-start vehicles

AURETR128	Diagnose and repair instruments and warning systems
AURETR129	Diagnose and repair charging systems
AURETR130	Diagnose and repair starting systems
AURETR131	Diagnose and repair ignition systems
AURETR132	Diagnose and repair automotive electrical systems
AURETR135	Apply knowledge of petrol and diesel engine operation
AURETR143	Diagnose and repair electronic body management systems
AURTTA118	Develop and carry out diagnostic test strategies
AURTTE104	Inspect and service engines

Electives

AURAF103	Communicate effectively in an automotive workplace
AURTTK102	Use and maintain tools and equipment in an automotive workplace
AURETR116	Read and apply vehicle wiring schematics and drawings
AURVTV001	Remove, replace and test non-electrical vehicle components and accessories
AURETR013	Inspect, test and service charging systems
AURETR014	Inspect, test and service starting systems
AURTTE104	Inspect and service engines
AURATA001	Identify basic automotive faults using troubleshooting processes
AURETR144	Diagnose and repair integrated engine and transmission management systems
AURETR045	Inspect, service and repair DC electric motor drive systems
AURETR120	Diagnose and repair network electronic control systems





Mobile plant technicians keep important Australian industries running. This qualification covers the skills and knowledge required to perform a broad range of tasks on a variety of mobile plant vehicles in the automotive service and repair industry. It is suitable for entry into the mining, construction and agricultural environment.

Learning outcomes

A Mobile Plant Mechanic is involved in servicing, repairing, overhauling and maintaining mobile heavy equipment such as highway transport vehicles, construction and earthmoving equipment, tractors and mobile industrial equipment.

Course costs

Students enrolling via an apprenticeship pathway may be eligible for subsidised training. Eligibility and student contribution fees vary state by state. Please contact Komatsu Training Academy for further information.

Duration

Up to 4 years.

Course duration may vary depending on your prior knowledge, skills and experience. If studying via an apprenticeship pathway this qualification is delivered face to face over a four (4) year period.

Delivery

There are a range of methods used for our training and assessment which include written and oral questions / answers, demonstration and observation of practical tasks.

Training locations

- » **Brisbane, QLD**
- » **Perth, WA**

Recognition of prior learning (RPL)

If you are currently working in the automotive electrical service industry and have more than 3 years' experience, please talk to a Komatsu Training Academy representative about RPL. Our specialist trainers can develop a tailored training plan for you based on your existing skills, knowledge and experience.

Resources required

Please note participants will be provided with all learning and assessment material. Participants will require their personal protective equipment (PPE) relevant to their workplace policy and procedures for undertaking practical activities.

Entry requirements

Eligible participants are normally employed by an employer who works within the Mobile Plant, Repair or relevant industry that would be suitable for an occupation.

Komatsu Training Academy recognises that not all participants will have the same level of ability in relation to reading, writing and performing calculations. All participants enrolling into a nationally recognised qualification will undertake a Language, Literacy and Numeracy (LLN) assessment, which is conducted online via LLN Robot. LLN Robot is an online system that combines Australian Core Skills Framework (ACSF) Testing, Course Profiling and LLN Support.

How to apply and enrol

Obtain an apprenticeship in **AUR31220**. Alternatively, if you have current existing knowledge, skills and experience then complete a RPL Application. Enrolments can be made directly through the Komatsu Training Academy.

Course structure

Total number of units = 36

9 core units, plus

27 elective units, of which:

- » all units in one of the Specialist Elective Groups A to C must be chosen
- » of the remaining units required to make up the unit total:
- » all may be from the Specialist Elective Groups and general elective units listed below
- » up to 6 may be from a Certificate II qualification or above in this Training Package or another endorsed Training Package or accredited course.

Core units

AURAEA002	Follow environmental and sustainability best practice in an automotive workplace
AURASA102	Follow safe working practices in an automotive workplace
AURETR112	Test and repair basic electrical circuits
AURETR125	Test, charge and replace batteries and jump-start vehicles
AURTTA006	Inspect and service hydraulic systems
AURTTA104	Carry out servicing operations
AURTTA105	Select and use bearings, seals, gaskets, sealants and adhesives
AURTTA118	Develop and carry out diagnostic test strategies
AURTTK102	Use and maintain tools and equipment in an automotive workplace

Elective units

AURETR129	Diagnose and repair charging systems
AURETR130	Diagnose and repair starting systems
AURKTA005	Inspect, service and repair track type drive and support systems
AURKTR101	Diagnose and repair electronic over hydraulic control systems
AURKTB101	Diagnose and repair mobile plant braking systems
AURKTD101	Diagnose and repair mobile plant suspension systems
AURETR132	Diagnose and repair automotive electrical systems
AURTF105	Diagnose and repair engine forced-induction systems
AURHTF102	Diagnose and repair heavy vehicle diesel fuel injection systems
AURHTE102	Diagnose and repair heavy vehicle compression ignition engines
AURETR124	Diagnose and repair compression ignition engine management systems
AURTF102	Inspect and service diesel fuel injection systems
AURKTD102	Diagnose and repair mobile plant steering systems
AURTTX103	Inspect and service automatic transmissions
AURTTX106	Diagnose and repair hydrostatic transmissions
AURKTX101	Diagnose and repair powershift transmissions
AURKTQ101	Diagnose and repair mobile plant final drive assemblies
AURHTQ103	Diagnose and repair heavy vehicle drive shafts
AURETU103	Service air conditioning and HVAC systems
AURETU104	Diagnose and repair air conditioning and HVAC components
AURETU105	Retrofit automotive air conditioning and HVAC systems
AURHTZ101	Diagnose and repair heavy vehicle emission control systems
AURTTK001	Use and maintain measuring equipment in an automotive workplace
AURTTE104	Inspect and service engines
AURTTC103	Diagnose and repair cooling systems
AURTTA012	Fabricate and install fluid power hose assemblies



Certificate III in Engineering - Fabrication Trade



This qualification will provide you with the skills and knowledge necessary to become a welder or metal fabricator tradesperson.

Course costs

Students enrolling via an apprenticeship pathway may be eligible for subsidised training. Eligibility and student contribution fees vary state by state. Please contact Komatsu Training Academy for further information.

Learning outcomes

This qualification is designed to provide an industry recognised skills profile related to trade work as an Engineering Tradesperson - Fabrication. Skills development is usually undertaken through an Australian Apprenticeship arrangement where the mix of on and off-the-job training is specified in the Training Plan associated with the Contract of Training between the employer and apprentice.

MEM31922 Certificate III in Engineering – Fabrication Trade gives you the training you need to start your career as a qualified engineering tradesperson. You will develop your skills in metal fabrication, earthmoving welding and fabrication, structural steel fabrication, sheet metal work, welding and the use of related computer-controlled equipment.

Duration

Up to 4 years.

Course duration may vary depending on your prior knowledge, skills and experience. If studying via an apprenticeship pathway this qualification is delivered face to face over a four (4) year period.

Training locations

» **Brisbane, QLD**

Recognition of prior learning (RPL)

If you are currently working in the engineering industry and have more than 3 years' experience, please talk to a Komatsu Training Academy representative about RPL. Our specialist trainers can develop a tailored training plan for you based on your existing skills, knowledge and experience.

Resources required

Please note participants will be provided with all learning and assessment material. Participants will require their personal protective equipment (PPE) relevant to their workplace policy and procedures for undertaking practical activities.

Entry requirements

Eligible participants are normally employed by an employer who works within the engineering industry.

Komatsu Training Academy recognises that not all participants will have the same level of ability in relation to reading, writing and performing calculations. All participants enrolling into a nationally recognised qualification will undertake a Language, Literacy and Numeracy (LLN) assessment, which is conducted online via LLN Robot. LLN Robot is an online system that combines Australian Core Skills Framework (ACSF) Testing, Course Profiling and LLN Support.

How to apply and enrol

Obtain an apprenticeship in MEM31922, or if you have current existing knowledge, skills and experience, then complete a RPL Application. Enrolments can be made directly through the Komatsu Training Academy.

Course contents

To be awarded the MEM31922 Certificate III in Engineering – Fabrication Trade, units of competency to the value of 96 points must be achieved, chosen as outlined below:

- » all core units of competency listed below (totalling 33 points)
- » elective units of competency to a minimum value of 40 points from Groups A, B, C, D, E, F and G as described below
- » elective units of competency to a maximum value of 23 points from Group H to bring the total value to 96 points.

Competency

Code	Competency Name	Core/Elective
MEM09002	Interpret technical drawing	C (P = 4) *
MEM11011	Undertake manual handling	C (P = 2) *
MEM12023	Perform engineering measurements	C (P = 5) *
MEM12024	Perform computations	C (P = 3) *
MEM13015	Work safely and effectively in manufacturing and engineering	C (P = 2)
MEM14006	Plan work activities	C (P = 4) *
MEM16006	Organise and communicate information	C (P = 2) *
MEM16008	Interact with computing technology	C (P = 2) *
MEM17003	Assist in the provision of on-the-job training	C (P = 2) *
MEM18001	Use hand tools	C (P = 2) *
MEM18002	Use power tools/handheld operations	C (P = 2) *
MSMENV272	Participate in environmentally sustainable work practices	C (P = 3)
	Electives – Group A (Fabrication Trade - Generic)	Group/Point
		33
	Electives – Group B (Boilermaking Trade Specialisation)	Group/Point
MEM05007	Perform manual heating and thermal cutting	2
MEM05012	Perform routine manual metal arc welding	2
MEM05004	Perform routine oxy fuel gas welding	2
MEM05049	Perform routine gas tungsten arc welding	2
MEM05015	Weld using manual metal arc welding process	4
MEM05091	Weld using gas metal arc welding process	4
MEM05056	Perform Routine Flux Core Arc Welding	2
MEM05010	Apply fabrication, forming and shaping techniques	8
MEM05089	Assemble fabricated components	8
MEM05094	Repair/replace/modify fabrications	4 =38
	Electives – Group H (General Electives)	Group/Point
MEM05085	Select welding processes	2
MEM05050	Perform routine gas metal arc welding	2
MEM05005	Carry out mechanical cutting	2
MEM05037	Perform geometric development	6
MEM12007	Mark off/out structural fabrications and shapes	4
MEM24001	Perform Basic Penetrant Testing	2
MEM05052	Apply safe welding practices	4
MEM05073	Perform advanced welding using gas metal arc welding process	4



Skills gap holding you back?

Bridge it with Komatsu Training Academy short courses



Komatsu Training Academy offers comprehensive training, including of a number of industry-developed nationally accredited Short Courses and workshops that have been designed to meet the needs of various levels of industry knowledge and experience, while providing cost effective training opportunities for businesses and individuals.

Short Courses

Short Courses available through Komatsu Training Academy include:

HSE-specific education and training

CPCCWHS1001	Prepare to work safely in the construction industry
HLTAID009	Provide cardiopulmonary resuscitation
HLTAID011	Provide first aid
RIIWHS202E	Enter and work in confined spaces
RIIWHS204E	Work safely at heights
TLILIC0003	Licence to operate forklift truck
UETDRRF004	Perform rescue from a live LV panel.

Plant operator training

RIIHAN308F	Load and unload plant
RIIMPO318F	Conduct civil construction skid steer loader operations
RIIMPO319E	Conduct backhoe / loader operations
RIIMPO320F	Conduct civil construction excavator operations
RIIMPO321F	Conduct civil construction wheeled front end loader operations
RIIMPO323E	Conduct civil construction dozer operations
RIIMPO325E	Conduct civil construction scraper operations
RIIMPO337E	Conduct articulated haul truck operations
RIISAM301F	Test operational functions of vehicles and equipment
RIIVEH304E	Conduct tip truck operations

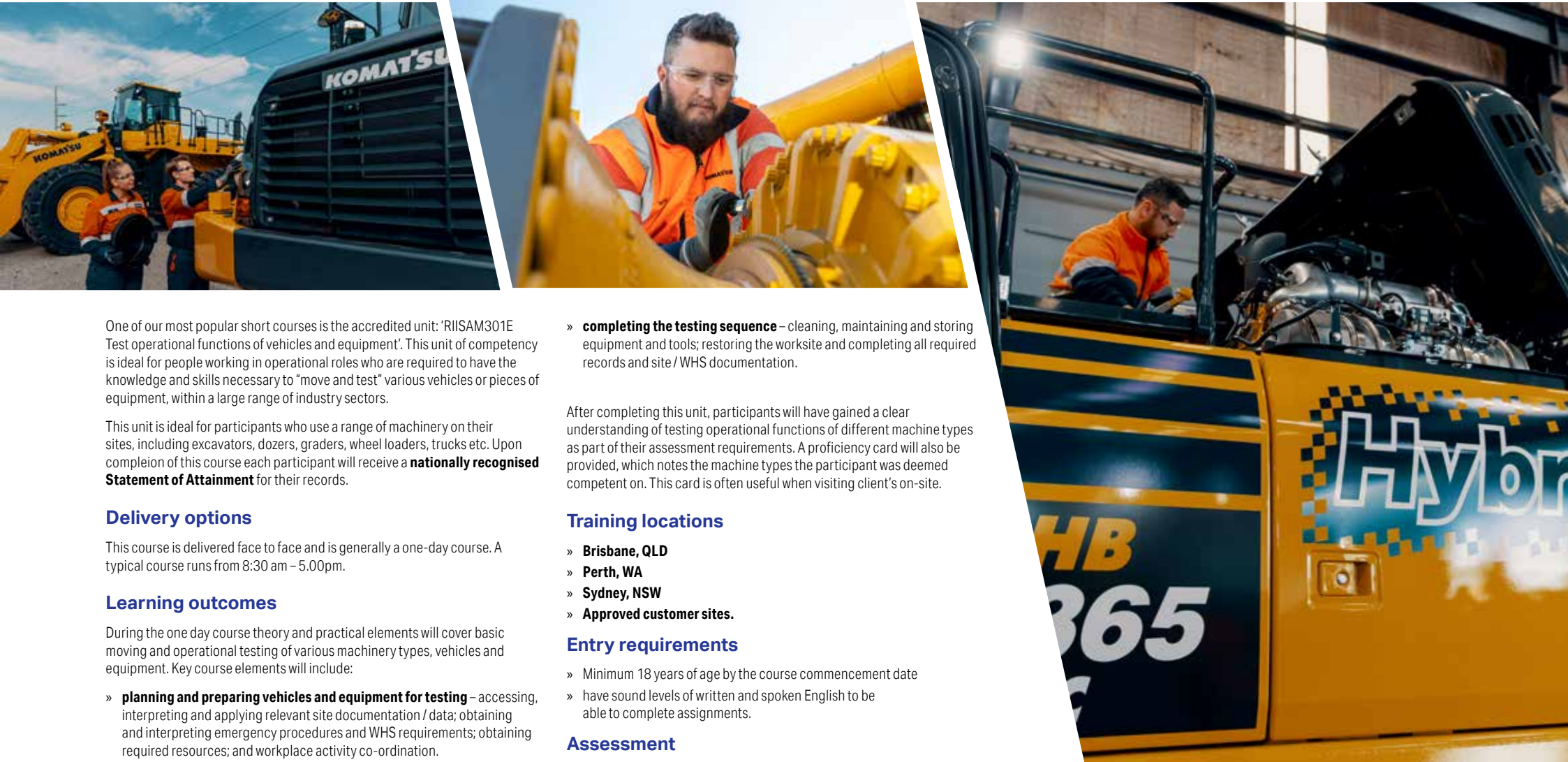
Advanced technical training

UEECD0007	Apply work health and safety regulations, codes and practices in the workplace.
UEERL0007	Disconnect-reconnect 3.3 kV electric propulsion components of self-propelled earth moving vehicles.

Komatsu Training Academy can also work with you to develop specific training and educational programs to meet your customised learning needs. Contact us today to discuss how we can tailor a program to increase your operational productivity while meeting your business goals and objectives.

RIISAM301F

Test operational functions of vehicles and equipment



One of our most popular short courses is the accredited unit: 'RIISAM301E Test operational functions of vehicles and equipment'. This unit of competency is ideal for people working in operational roles who are required to have the knowledge and skills necessary to "move and test" various vehicles or pieces of equipment, within a large range of industry sectors.

This unit is ideal for participants who use a range of machinery on their sites, including excavators, dozers, graders, wheel loaders, trucks etc. Upon completion of this course each participant will receive a **nationally recognised Statement of Attainment** for their records.

Delivery options

This course is delivered face to face and is generally a one-day course. A typical course runs from 8:30 am – 5:00pm.

Learning outcomes

During the one day course theory and practical elements will cover basic moving and operational testing of various machinery types, vehicles and equipment. Key course elements will include:

- » **planning and preparing vehicles and equipment for testing** – accessing, interpreting and applying relevant site documentation / data; obtaining and interpreting emergency procedures and WHS requirements; obtaining required resources; and workplace activity co-ordination.
- » **physical testing of vehicles and equipment** – carrying out pre-start, start-up, shut-down and isolation procedures; moving and relocating machinery for testing purposes; identifying and rectifying faults / reporting monitoring systems warning and alarms; arranging for corrective action to be taken; recognising and responding to hazardous / emergency situations.

- » **completing the testing sequence** – cleaning, maintaining and storing equipment and tools; restoring the worksite and completing all required records and site / WHS documentation.

After completing this unit, participants will have gained a clear understanding of testing operational functions of different machine types as part of their assessment requirements. A proficiency card will also be provided, which notes the machine types the participant was deemed competent on. This card is often useful when visiting client's on-site.

Training locations

- » **Brisbane, QLD**
- » **Perth, WA**
- » **Sydney, NSW**
- » **Approved customer sites.**

Entry requirements

- » Minimum 18 years of age by the course commencement date
- » have sound levels of written and spoken English to be able to complete assignments.

Assessment

This course is assessed through demonstration, presentation and application of all elements of competency in the workplace. Participants will be required to complete activities that include role-plays, oral and written questioning, practical demonstrations and performing scenarios.

HLTAID009 and HLTAID011

Provide cardiopulmonary resuscitation and Provide first aid



HLTAID009 Provide cardiopulmonary resuscitation

Upon completion of this course each participant will receive a **nationally recognised Statement of Attainment** for their records.

Course overview

Komatsu Training Academy provides a CPR course that complies with the Australian Resuscitation Council (ARC) Guidelines relating to the provision of Cardiopulmonary Resuscitation.

Learning outcomes

- » Learn the First Aid method of **DRSABCD**:
 - **D**anger
 - **R**esponse
 - **S**end for help
 - **A**irway
 - **B**reathing
 - **C**PR
 - **D**efibrillation
- » Implement DRSABCD action plan
- » How to respond to emergency situations
- » Managing unconscious casualties
- » Cardiopulmonary resuscitation (CPR) procedures
- » Using a defibrillator (AED)
- » Legal issues in first aid
- » Infection control.

HLTAID011 Provide first aid

Upon completion of this course each participant will receive a **nationally recognised Statement of Attainment*** for their records.

**Note: This unit of competence incorporates the content of HLTAID009 - Provide cardiopulmonary resuscitation (CPR).*

Course overview

Komatsu Training Academy provides a First Aid course that complies with the Australian Resuscitation Council (ARC) Guidelines relating to the provision of first aid.

Learning outcomes

- » The basic ethics and theory involved in first aid practice
- » The measures that need to be taken to effectively deal with issues concerning major or minor injury and illness
- » The most important management steps that need to be undertaken when dealing with potentially critical conditions
- » Basic health and safety knowledge that is required when dealing with first aid situations
- » The principles, procedures and standard precautions that need to be undertaken to control infection and its spread
- » You will master the knowledge of 'Chain of Survival'
- » You will learn the skills a First Aider requires and what limitations you should be aware of
- » How and when an Automated External Defibrillator (AED) should be used.

You will learn first aid management of:

- » **Injuries:** Cold and crush injuries, eye and ear injuries, head, neck and spinal injuries; minor skin injuries; needle stick injuries; soft tissue injuries including sprains, strains and dislocations
- » **Burns:** From thermal, chemical, friction, or electrical contact
- » **Environmental Impact:** Hypothermia, hyperthermia, dehydration or heat stroke
- » **Envenomation:** From a snake, spider, insect and marine bites/stings
- » **Medical conditions:** Such as cardiac conditions, epilepsy, diabetes, asthma, and other respiratory conditions
- » **Substance Misuse:** High intake of common drugs and alcohol, including illicit drugs
- » **Stress Management:** Techniques and available support
- » **Other Conditions:** Allergic reactions, bleeding, chest pain, choking/airway obstruction, fractures, near drowning, respiratory diseases, seizures, shock, stroke, altered or loss of consciousness, excessive intake of poisoning and toxic substances (including chemical contamination)
- » As per CPR learning outcomes.

Delivery options

The following delivery option is available for **HLTAID009** Provide cardiopulmonary resuscitation:

- » Face-to-face training
Half day face to face training (4 hours).

The following delivery options are available for **HLTAID011** Provide first aid course:

- » Flexible delivery
One full day of training (8 hours) plus a question and answer workbook (available online) to be completed independently prior to the day of practical training
- » Face-to-face training
Two full days of face to face training (16 hours).

Training locations

- » **Brisbane, QLD**
- » **Perth, WA**
- » **Sydney, NSW**
- » **Hunter Valley, NSW**
- » **Approved customer sites.**

Resources required

Please note participants will be provided with all learning and assessment material. Participants will require their personal protective equipment (PPE) relevant to their workplace policy and procedures for undertaking practical activities.

Entry requirements

- » Participants must have the physical ability to provide resuscitation by kneeling on the floor and performing two (2) minutes of uninterrupted CPR
 - » Participants must be at minimum of fourteen (14) years of age
- Participants under the age of 18 will be required to provide a signed parental consent form prior to attending the course.

Assessment

This course is assessed through demonstration, presentation and application of all elements of competency in the workplace. Participants will be required to complete activities that include role-plays, oral and written questioning, practical demonstrations and performing scenarios.

Validity

HLTAID011 is valid for three (3) years from the date of the course. It is required that the CPR component of this course is to be updated every 12 months to keep your certificate current.



UEERL0007

Disconnect-reconnect 3.3 kV electric propulsion components of self-propelled earth moving vehicles



Course overview

This course is designed for fitters/mechanics working on 3.3kV electric propulsion components of an engine driven, self-propelled earthmoving vehicle. This nationally accredited course, provides you with the skills and knowledge to identify circuits and isolation arrangements, follow isolation procedures, select and use of HV testing and measuring devices, terminate and connect HV cables and conductors, and safely test electrical components of an electrical self-propelled engine driven earthmoving vehicle, with a focus on a high level of safety.

Delivery options

This course is delivered face to face and generally takes around 5 days to complete. A typical course runs from 8:00 am – 4.00pm daily.

Learning outcomes

This unit covers isolating, disconnecting and reconnecting HV electric propulsion components on engine driven, self-propelled earthmoving vehicles under the restrictions of designated electrical equipment and conditions specified, operating at 3,300 volts.

- » Working safely identifying circuit and isolation arrangements
- » Following isolation procedures
- » Selecting and using HV testing and measuring devices
- » Terminating and connecting HV cables and conductors
- » Safety testing and reporting.

This course is intended for fitters/mechanics, providing them with the knowledge and skills to safely work on the electrical components of electric-

drive earth moving vehicles. It relates specifically to Restricted Electrical Licence requirements when applying for a permit in Western Australia and Queensland.

NOTE: This course fulfils all the *Western Australian Department of Mines, Industry Regulation and Safety (DMIRS) Energy Safety and Licencing Office* and the *Queensland Workplace Health and Safety Electrical Safety Office Licencing Department* regulatory requirements with regards to the disconnection and reconnection of HV electric propulsion components of self-propelled earth moving vehicles.

Training locations

- » **Brisbane**
- » **Perth**
- » **Approved customer sites.**

Resources required

Please note participants will be provided with all learning and assessment material. Participants will require their personal protective equipment (PPE) relevant to their workplace policy and procedures for undertaking practical activities.

Assessment

This course is assessed through demonstration, presentation and application of all elements of competency in the workplace. Participants will be required to complete activities that include role-plays, oral and written questioning, practical demonstrations and performing scenarios.

Entry requirements

- » Minimum 18 years of age by the course commencement date
- » Have sound levels of written and spoken English to be able to complete assignments.

There is a mandatory pre-requisite online unit UEECD0007 - Apply work health and safety regulations, codes and practices in the workplace; which must be completed online prior to enrolling into this course. Strict eligibility criteria applies to those participants wishing to enrol into this course. Criteria varies from State to State. Please contact Komatsu Training Academy for further information prior to enrolment.

CPCCWHS1001

Prepare to work safely in the construction industry (white card)



Course overview

Komatsu Training Academy's Prepare to work safely in the construction industry course is a nationally recognised safety induction to ensure you are able to work legally on construction sites nationwide.

Delivery options

This course is delivered face to face and generally takes around six hours to complete. A typical course runs from 8:30 am - 3:30pm.

Learning outcomes

- » General safety induction for construction sites
- » Identify and understand roles, responsibilities and rights of duty holders
- » Understand WHS communication and reporting processes
- » Apply the principles of risk management
- » Identify common hazards and control measures
- » Interpret and apply safety information and documentation
- » Use safe work practices
- » Respond to WHS incidents.

Training locations

- » **Brisbane, QLD**
- » **Perth, WA**
- » **Sydney, NSW**
- » **Approved customer sites.**

Resources required

Please note participants will be provided with all learning and assessment material. Participants will require their personal protective equipment (PPE) relevant to their workplace policy and procedures for undertaking practical activities.

Entry requirements

- » Minimum 15 years of age by the course commencement date
- » Have sound levels of written and spoken English to be able to complete assignments.

Assessment

This course is assessed through demonstration, presentation and application of all elements of competency in the workplace. Participants will be required to complete activities that include role-plays, oral and written questioning, practical demonstrations and performing scenarios.



Enter and work in confined spaces



The Confined Space Entry training equips authorised employees with the knowledge and skills to safely enter and operate in confined spaces, avoiding exposure to hazardous substances, flammable or explosive conditions, collapses or other safety or health issues that could cause injury, illness or death.

Course overview

This nationally accredited course is to provide employees with the necessary training to enter and work in a confined space. This unit covers the control of entry to confined spaces, for maintenance, servicing of vessels of other necessary reasons.

This course is aimed towards employees that may need to work in a confined space or supervisors of employees who work in confined spaces, also those that maintain confined space equipment.

Though there are no qualification prerequisites, participants must be physically able to enter confined spaces.

Delivery options

This course is delivered face to face and is generally a one-day course. A typical course runs from 8:30 am – 5.00pm.

Learning outcomes

- » Identifying confined spaces
- » Identification and control of hazards
- » Australian Standards and relevant legislation
- » Roles and responsibilities of management and employees
- » Risk assessments and hierarchy of hazard controls
- » Work according to a confined space permit
- » Work site policy and procedures
- » Write work plans and risk assessments
- » Lockout and tag out methods of isolation
- » Atmospheric monitoring and gas detection
- » Fall protection equipment
- » Practical entry into a confined space
- » Safety and emergency procedures.

Training locations

- » **Brisbane, QLD**
- » **Perth, WA**
- » **Approved customer site.**

Resources required

Please note participants will be provided with all learning and assessment material. Participants will require their personal protective equipment (PPE) relevant to their workplace policy and procedures for undertaking practical activities.

Entry requirements

- » Minimum 18 years of age by the course commencement date
- » Have sound levels of written and spoken English to be able to complete assignments.

Assessment

This course is assessed through demonstration, presentation and application of all elements of competency in the workplace. Participants will be required to complete activities that include role-plays, oral and written questioning, practical demonstrations and performing scenarios.



Course overview

This nationally recognised course covers theoretical and practical aspects of working at height.

During the course we will assist you to develop safe work method statements and risk assessments for working at height. All workers who conduct or supervise tasks whilst at height will find this course beneficial to workplace safety and will enable you to comply with current WHS legislation.

Training can be conducted at your work site or off-site at one of our purpose-built training facilities. Work at heights training is focused on fall prevention rather than fall arrest. It is designed to equip workers with the knowledge and skills to safely work in any height situation, primarily being aimed at general construction, maintenance, mining, large factories or other work situations where work is conducted in a place where a fall from one level to another is possible.

Our working at heights training course will run the participants through areas including statutory and regulatory authority requirements, heights safety systems, safety equipment and consideration to facilitate working safely at heights, safe shifting and handling of tools and material, and the processes of providing for safe work practices.

Delivery options

This course is delivered face to face and is generally a one-day course. A typical course runs from 8:30 am – 5.00pm.

Learning outcomes

- » Interpret and apply technical and safety information for working at heights
- » Assess hazards and risk associated with working at heights and implement control methods
- » Select wear and care for personal protective equipment
- » Identify required safety systems including fall protection and associated equipment
- » Check that fitting, adjusting and anchoring of fall protection and associated equipment is correct
- » Perform work safely at heights
- » Safe shifting and handling of tools and materials
- » Adhere to statutory and regulatory authority requirements
- » Comply with heights safety systems
- » Comply with safe work methods
- » Locate and apply relevant documentation, policies and procedures.

Training locations

- » **Brisbane, QLD**
- » **Perth, WA**
- » **Approved customer site**

Resources required

Please note participants will be provided with all learning and assessment material. Participants will require their personal protective equipment (PPE) relevant to their workplace policy and procedures for undertaking practical activities.

Entry requirements

- » Minimum 18 years of age by the course commencement date
- » Have sound levels of written and spoken English to be able to complete assignments.

Assessment

This course is assessed through demonstration, presentation and application of all elements of competency in the workplace. Participants will be required to complete activities that include role-plays, oral and written questioning, practical demonstrations and performing scenarios.

TLILIC0003

Licence to operate a forklift truck



We deliver high quality, reliable forklift training solutions that will give you the skills to meet the highest standards of safety and compliance as a Forklift Operator. When you complete the High Risk Unit of Competency TLILIC0003 Licence to operate a forklift truck with Komatsu Training Academy you will receive a Statement of Attainment that will give you the skills to safely operate a Forklift in the workplace.

Course overview

This unit of competency specifies the skills and knowledge required to operate a forklift truck safely. A Forklift truck is a powered industrial truck equipped with lifting media made up of a mast and an elevating load carriage to which is attached a pair of fork arms or other arms that can be raised 900 mm or more above the ground, but does not include a pedestrian-operated truck or a pallet truck.

A person performing this work is required to hold a Forklift Truck (LF) High Risk Work (HRW) Licence in order to remain employed, or gain employment, as an operator of these vehicles.

Successful completion of our Forklift Course will result in you being able to apply to the relevant State Licensing Department in order to apply to obtain a Forklift Licence (LF). For more information simply contact us to arrange a training event on your site, or alternatively at one of our purpose built technical training facilities.

Delivery options

Day 1 will be a combination of theory activities in the classroom and practical activities in the warehouse. Day 2 will be a full practical skills day covering the basics of operation, load handling and working in pallet racking with Day 3 concluding with an formal assessment of the theoretical and practical

knowledge and skills learned throughout the course, depending upon individual State compliance requirements.

Learning outcomes

- » WH&S legislation
- » Risk and hazards
- » General inspections and preparation of work site requirements
- » Plan and prepare work
- » Conduct routine checks and equipment maintenance
- » Operate forklift truck
- » Shift loads
- » Shut down and secure forklift truck.

Duration

As this course has High Risk Licencing outcomes it is strictly governed by individual State Licencing requirements and as such course duration may vary from State to State.

The course may be run over three consecutive weekdays from 8:30 am – 4:30 pm at selected sites.

Training locations

- » **Brisbane, QLD**
- » **Perth, WA**
- » **Sydney, NSW**
- » **Approved customer site**

Resources required

Please note participants will be provided with all learning and assessment material. Participants will require their personal protective equipment (PPE) relevant to their workplace policy and procedures for undertaking practical activities.

Entry requirement

This may vary from State to State however generally the following will apply:

- » High Risk Work Licence Assessments can only be undertaken at the age of 18 years or over
- » Logbooks recording forklift operating hours under supervision (may be required in certain circumstances)
- » ID to a total of 100 points eg. current Drivers Licence / Passport etc. to be supplied prior to enrolment
- » ID requirement may vary from State to State which will be informed of at time of course enrolment
- » Applicants will need to have a basic knowledge and understanding of the English language
- » PPE must be worn by participants on all occasion when attending a Forklift Course at any site in any State. This includes steel cap boots, long pants, long sleeves, (high vis shirt if possible otherwise long sleeves with a high vis vest) and a safety hard hat.

Assessment

This course is assessed through demonstration, presentation and application of all elements of competency in the workplace. Participants will be required to complete activities that include role-plays, oral and written questioning, practical demonstrations and performing scenarios.

52844WA

Course in Working Effectively in an Automated Workplace



Kick start your career in the world of Automation!

This micro credential short course will prepare students on how to read and interpret data and work effectively in an automated workplace.

Automation is one of the key technology trends in Industry 4.0 and is accelerating the efficiency of organisations by utilising new and emerging technologies to automate processes. Future proof your career by staying ahead of the curve to a job of the future.

This course is ideal for apprentices looking to extend their skills as an add-on to their apprenticeship, or the unit can form part of an apprenticeship. For those not already registered as an apprentice, this course is also suitable as it gives newcomers to the industry a chance to explore the world of automation.

Duration

4 days.

Training locations

» Welshpool

Units included in this course

AWADAT0001	Use Data in an Automated Workplace - This unit explores the types and sources of data, how data is used and why this understanding of data is vital to working effectively in an automated workplace.
AWAAUT0002	Work in an Automated Workplace - This unit explores what an automated workplace is, how it has evolved, how it is controlled, where it can be applied, and what processes and procedures ensure it functions safely, efficiently and effectively. It emphasises the roles within an automated workplace, the communications skills needed and the importance of the human-machine interface. The unit equips workers with the knowledge and skills to work alongside automated equipment.

BSB50420

Diploma of Leadership & Management



Komatsu Training Academy delivers the BSB50420 Diploma of Leadership and Management online or via a mixed mode delivery. This means students complete their course at their own pace, using Komatsu Training Academy's online student portal. Delivery includes face-to-face workshops, webinars, self-paced study, directed research, and online learning and assessment materials and activities.

Online study is ideal if you want to learn according to your own schedule and gain your qualification as fast as you can. You can study at your own pace with full trainer support throughout your studies. Your course materials are accessed online, so you are free to work on your course in your own time, from anywhere in Australia.

This nationally recognised qualification is made up of 12 units and is designed to equip you with the practical knowledge and skills required to step up and hit the ground running as a leader and manager. Through this Diploma, you will learn to develop fundamental business skills, including leadership, performance management, customer service, workplace priorities, risk and project management, and the ability and confidence to manage a team.

To discuss a training plan that best suits your experience and needs please contact Komatsu Training Academy. This qualification is a steppingstone to an Advanced Diploma or Bachelor's degree.

Learning outcomes

- » Communicate with influence
- » Effectively manage workplace relationships
- » Manage operational plans to achieve set goals
- » Manage team effectiveness
- » Develop critical thinking in others
- » Develop and use emotional intelligence

Duration

You will have up to **12 months** starting from your commencement date to complete your course.

Training locations

- » **Brisbane**
- » **Perth**
- » **Fairfield**

Resources required

Participants will be provided with all learning and assessment materials in order to complete this course.

Recognition of prior learning (RPL)

If you are currently working in a management and leadership position and have more than 2 years business management experience, please talk to a Komatsu Training Academy consultant about Recognition of Prior Learning (RPL) eligibility. Our expert trainers can develop a tailored training plan for you based on your existing role and experience.

Course content

The successful achievement of this Qualification requires you to complete 12 units in total. These include 6 core units and 6 elective units as outlined below:

Core Units

BSBCMM511	Communicate with influence
BSBCRT511	Develop critical thinking in others
BSBLDR523	Lead and manage effective workplace relationships
BSBOPS502	Manage business operational plans
BSBPEF502	Develop and use emotional intelligence
BSBTWK502	Manage team effectiveness

Elective Units

BSBFIN501	Manage budgets and financial plans
BSBLDR522	Manage people performance
BSBSTR501	Establish innovative work environment
BSBOPS504	Manage business risk
BSBSUS511	Develop workplace policy and procedures for sustainability
BSBPEF501	Manage personal work priorities and professional development

If you are unsure of what's right for you, or would like to discuss this and other Komatsu Training Academy programs in more detail, please call us on 1300 390 377.



Two female workers in orange and blue high-visibility uniforms are standing in a large industrial warehouse. They are looking at a document held by one of the workers. In the background, a large yellow and black tractor is visible, along with various tools and equipment on the floor.

A female worker in an orange and blue high-visibility uniform is working on a piece of machinery. She is wearing safety glasses and orange gloves. The machinery has a black cylindrical component labeled 'KOMATSU LUBE FILTER' with the part number '9142-01-4540' visible. The worker is focused on her task, and the background shows more industrial equipment.



NATIONALLY RECOGNISED
TRAINING

RTO No: 90996

Komatsu Training Academy is a Registered Training Organisation (RTO) specifically developed to assist our construction, quarry and mining customers by delivering nationally recognised and customised training where they need it – online, on-site, at customers' premises or at our own dedicated training facilities. Our offerings include a mix of fully accredited, nationally recognised courses and units, along with customised training.

KOMATSU
Creating value together

1300 566 287 | komatsu.com.au

Form No: ZESB099934_MAY2023

