

Downtoearth

**Komatsu on track at the
Australian Grand Prix**



**A look at our electric and hybrid
excavator offerings**

**Komatsu and Rio Tinto celebrate
300th AHS delivery**

**Partnership provides employment opportunities
for disability sector**



1300 566 287 | [komatsu.com.au](https://www.komatsu.com.au)

KOMATSU

Creating value together



Komatsu and sustainability

Komatsu is committed to empowering a sustainable future. We are continually adapting and evolving our Environmental, Social and Governance (ESG) practices so that our people, our businesses and our planet can thrive together.

KOMATSU
Creating value together



Comments

As we progress through an exciting year, I am pleased to share some of the remarkable milestones and innovations that are shaping the future of not only Komatsu, but our industry too. In this issue, we celebrate a significant achievement with the delivery of our 300th Autonomous Haulage System (AHS) Truck to Rio Tinto—a testament to our commitment to driving forward the capabilities of autonomous technology in mining. This milestone represents not just a number, but the hard work, dedication, and collaboration of our entire team and partners who continuously push the boundaries of what's possible.

Over the past several months, we have also introduced a number of new machine models to better meet the needs of our customers in our local market, including the; WA475-10, 26 tonne wheel loader, a HD605-10 rigid dump truck and a 2.5 tonne PC25MR-5 mini excavator.

We're also proud to announce the renewal of our contract with Endeavour Foundation. Since our partnership began in 2021, together we have recycled over 450,000 KOWA bottles, preventing 12,000 kg of waste from going to landfill. This is not just a victory for sustainability, but a great example of what we can achieve when we work together.

Additionally we are excited to share inspiring stories like Brianna Rennie and Keiron Hinsley extraordinary Live Your Dream (LYD) 130km trek to support Zero2Hero, who are dedicated to educating and empowering young individuals to become mental health advocates. The Live Your Dream program has been running since 2017 and gives Komatsu employees the opportunity to contribute to organisations in their local community or wider society that are close to their hearts.

As we celebrate the successes of the year, we can continue to redefine industry standards, foster innovation, and create lasting value for you, our customers and stakeholders.

At the centre of all our efforts is our commitment to you, our customers. Your feedback and partnership drive us to innovate and deliver solutions that not only meet but exceed your expectations. As we look ahead, I am confident that together, we can continue to build a more sustainable, efficient, and forward-thinking industry.

Thank you for your ongoing support. I hope you enjoy this issue of Down 2 Earth and find inspiration in the stories we share.

Warm regards,

Sean Taylor
CEO & Managing Director

Contents

Sponsorships

Komatsu on track at the Australian Grand Prix 4-5

Products and services

A look at our electric and hybrid excavator offerings 6-7
30% more fuel efficiency for operators with new WA475-10 wheel loader 8
New PC88MR-11 excavator provides 7% improvement in productivity 9
PC25MR-5 mini excavator delivers on size and performance 10
HD605-10 dump truck lands on Australian shores 11
930E: pioneering the future of mining in Australia 16-17
One year on: myFleet proves to be a valuable tool for fleet management 20-21

Customer stories

A tried and tested partnership between SNK Group and Komatsu 12
Reliability, productivity and support key for Tequa and Komatsu partnership 13
Komatsu and Rio Tinto celebrate 300th AHS delivery 15

Careers

Youth program to build STEM skills for heavy industries 18
Invest in yourself with a career at Komatsu 19

Community

Partnership provides employment opportunities for disability sector 14
Employees ready to give back 22
Pedalling with purpose 23

Kids Corner

Empowering a sustainable future word search 25

Contributors

Editor

Alison Davey and Belinda Zaidan
Komatsu Australia

Copywriters

Hardman Communications

Graphic Design

Joanna Sullivan

Printed by

Snap Printing-Wetherill Park

Contact details

Komatsu Australia Pty Ltd.
50-60 Fairfield Street,
Fairfield East NSW 2165 Australia
Web AUS. komatsu.com.au
Web NZ. komatsu.co.nz



Printed on Maine Recycled - Gloss
Printed in Australia

© Komatsu Australia Pty Ltd
Down to Earth Magazine is a
Komatsu Australia Pty Ltd publication.

Komatsu on track at the Australian Grand Prix



Pictured: Komatsu apprentices Alexander Connell and Brittney Lyon got the experience of a lifetime in the pit with Williams Racing at the Australian GP in March.

As part of our multi-year deal as Principal Partner of F1 team Williams Racing, employees and customers were lucky enough to be a part of the action as the Australian GP hit Melbourne in March.

Komatsu signed a multi-year deal with Williams Racing to become the Principal Partner of the British team from the start of the 2024 FIA Formula One World Championship (F1) season.

Williams Racing is one of the world's most iconic Formula One teams. The British outfit has been competing at the highest level for almost five decades, amassing 114 victories, 313 podiums and 128 pole positions in that time. Williams Racing has also won 15 championships, making them the second most successful team in the history of the sport.

Komatsu's logo and branding features prominently on the 2024 Williams Racing livery, as well as the team's overalls and kit during the Formula One season.

Once in a lifetime opportunity for Komatsu apprentices

Two of our leading apprentices, selected by their peers, were given the opportunity to get up close with some of the fastest cars in the world, as they spent the weekend of the Australian GP in the Williams Racing pit, learning the tricks of a different trade.

Alexander Connell from our Campbellfield branch in Melbourne, and New Zealand apprentice Brittney Lyon got to see firsthand the fast-paced nature of an F1 pit and what is involved in keeping the car running for the elite event.

"It was an incredible experience. I was close to buying tickets for the GP this year, so as a fan to be given this opportunity, and see all the action in the pit is one I definitely won't forget," Alexander says.

"The way their teams work to process and understand all the data from the cars and their laps, and use that to improve performance was fascinating, especially as we do similar things with our own Komatsu systems and machines, but on a slightly different scale."

A look at our electric and hybrid excavator offerings

2024 has seen a strong focus on our electric and hybrid solutions for customers, as we continue our commitment to a net-zero future.

David Small, our Executive General Manager for Construction and Utility says as more sustainable solutions become commercially available, there is growing enthusiasm in the industry to test, trial and adopt them into machinery fleets.

"We know organisations are becoming increasingly conscious of their environmental footprint, particularly as reporting on ESG is set to become a regulatory requirement so, our customers are searching for offerings, such as hybrids and electrics, that will positively contribute to their sustainability profile," David says.

Two electric excavators hit our shores

Part of this focus has been the arrival of two electric excavator prototypes in Australia. The PC210LCE-11 hydraulic electric excavator and the PC33E-6 electric mini excavator have been on a roadshow to give customers and the wider industry a glimpse of our electric machinery offering, while also enabling us to gather feedback that will be key to how we commercialise and introduce these products.

The PC210LCE-11 was created for construction businesses that need a high-performance machine while cutting fuel costs, and features lithium-ion battery technology developed by Proterra. The excavator has 451 kWh of battery capacity, designed for up to eight hours of operating time.

The PC33E-6 is a three-tonne electric mini-excavator equipped with a 35kWh lithium-ion battery offering enough working capacity for most applications, while saving more than its own body mass in CO₂ emissions per year when compared to conventional diesel-powered products.

David adds that the PC210E is identical to its diesel counterpart, the PC210LC-11, in performance and general specifications.

"These electric machines open the door to expand a contractor's business to indoor sites, congested residential and commercial areas, and sites with restrictive noise and exhaust regulations. Due to its quiet operations, we're expecting a lot of interest in this machine for overnight and indoor worksites.



"These machines also help operators reduce their fatigue and work more productively, with less noise and zero engine vibration, as well as lessening the harmful risk associated with exhaust emissions in closed spaces," David says.

Early adopters of proven technology

David adds that our track record in the electric space stretches back two decades.

"We've sold over 1,300 electric drive trucks in Australia, and over 380 electric mining excavators globally, and demand for these game-changing machines is only growing.

"Hybrid technology plays a huge part in this, launching our first hybrid machine in Australia in 2008. Our customers recognise these models as a great stepping stone technology towards an electric fleet, they're proven technology available now," David says.

"Customers in the Australian and Oceania market, including New Zealand, are early adopters of new technology, and we saw that with the introduction of guidance control in recent years. They actively seek the latest advancements and challenge us as a business to bring innovations forward. It's truly exciting to see industry really picking up the pace on adoption of both hybrid and electric equipment, and we're excited to continue expanding the range of machines we offer with these solutions, without compromising on productivity," David says.

"When introducing new models, commercial viability and price points are critical considerations. The market, driven by both regulatory mandates and commercial incentives, will continue to influence the pace of adoption," David says.

Komatsu has committed to reaching zero carbon emissions by 2050 and halving our CO₂ emissions from product operations from our 2010 levels.



30% more fuel efficiency for operators with new WA475-10 wheel loader

Pictured: The WA475-10 is a versatile machine that combines power with our leading loader technology to provide an efficient and productive model for both quarry and waste sites.



The WA475-10, 26-tonne wheel loader has hit Australian shores a versatile machine that combines power with our leading loader technology to provide an efficient and productive model for quarry and waste sites.

The WA475-10 saves 30% more on fuel efficiency than the previous model and is perfect for any hauling or loading jobs with an outstanding combination of fuel efficiency, productivity and ease of operation.

Nick Vrontas, National Business Manager for Quarries says the significant upgrades on the WA475-10 make it an appealing addition to fleets.

"The WA475-10 features the newly developed Komatsu Hydraulic Mechanical Transmission (KHMT), an innovative solution that makes the loader more powerful and more fuel-efficient. Variable speed control allows operators to adjust the machine's top speed to meet specific site requirements, and the adjustable variable traction control also limits wheel spin on unstable and slippery ground conditions often found on many quarry and waste sites.

"We've also completely innovated the power control on this latest model. It's never been easier for an operator to find the right balance between traction and lifting power, with the hydraulic speed independently controlled from the accelerator pedal, and the boom speed controlled the hydraulic lever" Nick says.

Inset: The new WA475-10 saves 30% more on fuel efficiency than the previous model and is perfect for any hauling or loading jobs on quarry or waste sites.

An optimised Z-bar linkage system provides much more lift force and a higher tonnes-per-hour production rate on the WA475-10, and the response time of the hydraulics and the dumping or lifting can be set to specific site requirements.

"The WA475-10 engine is Tier 4 compliant, and at even low engine speeds the engine puts out high power and delivers more engine torque and performance. The engine's advanced electronic control system manages the airflow rate and the fuel injection, combustion parameters and aftertreatment functions, which provide optimised performance, reduced emissions, and advanced diagnostic capabilities, making it a powerful, yet environmentally friendly machine," Nick says.

"The loader can also be tailored for specific applications, whether that is the demanding nature of a waste site, or the abrasive environments of quarries. Our team will work with customers to provide a solution that is tailored to the loader's application, from enquiry to post delivery, maintaining service checks and requirements.

"We're beyond excited to have the loader on our shores, and we're looking forward to introducing it to many quarry and waste sites across the country," Nick says.

With improved hydraulic flow, the newly-introduced PC88MR-11 midi excavator promises a 7% productivity boost, according to Carl Grundy, National Sales Manager - Utility.

The PC88MR-11, recently launched in Australia and New Zealand, is designed for tight-access applications, including excavation, rock work and utilities projects. Carl says the machine is compact but doesn't compromise on performance and efficiency.

"We've made upgrades from the previous model, and seen some great improvements in productivity, comfort and serviceability. In particular, we've made some improvements to the hydraulic flow that means greater productivity and fuel efficiency for operators. The blade profile has also been redesigned, which makes backfilling and grading easier with this model.

"This model delivers 12% greater attachment circuit hydraulic flow than the previous model with improvements to the auxiliary hydraulic system, which lets operators get the most out of their attachments for the different types of jobs," Carl says.

The short tail swing and swing boom make the PC88MR-11 ideal for tight spaces in residential areas and its compact size means it can be easily transported on equipment trailers from site to site.

"We've also looked at the serviceability of the machine and how we can make that easier for customers. This model has three service access doors, including new doors at the rear of the machine, improving access for maintenance or repair.

"The cab is also designed with the operator in mind, ensuring it's a quiet and comfortable work environment and all the controls are easy to reach," Carl says.

The PC88MR-11 also comes standard with Komtrax™, our state of the art wireless monitoring system. "Komtrax gives owners and operators an easy way to track their machines, monitor their performance and stay up to date about the status of their equipment, saving time and maximising profits.

"The machine is backed by the service and support of our wide-reaching Komatsu branch network, meaning no matter where your jobsite is, our team is available to help with any issues.

"The previous model of the PC88MR was very popular, and we're looking forward to rolling this newest model out to our customers," Carl says.

New PC88MR-11 excavator provides 7% improvement in productivity



Pictured: The new PC88MR-11 midi excavator has been added to our range, promising operators a 7% saving in productivity.

PC25MR-5 mini excavator delivers on size and performance

The 2.5 tonne PC25MR-5 mini excavator has been added to our range - a compact machine that doesn't compromise on productivity or performance.

The PC25MR-5 delivers increased lift capacity and increased reach and dig depth from previous models in the range. Carl Grundy, National Sales Manager – Utility says the model fills a gap in the market and is sure to be popular addition to many of our customers fleets.

"The PC25MR-5 is two-inches wider than the previous model, but can still be still towed on a trailer, rather than having to invest in a truck to move it from site to site. It's also still compact enough at 1.5m wide to suit the tight worksites you find on residential builds or city projects.

"This model will be the perfect addition for landscapers or contractors doing demolition or digging work. It's a user-friendly model, that still delivers on performance," Carl says.

The PC25MR-5 comes with our CLSS (Closed-Centre Load Sensing System) which guarantees power, speed and perfect control for all machine movements, including simultaneous ones.

"The combination of the variable displacement pump and CLSS allows operators to perform all required movements with maximum efficiency, regardless of the load or RPM. The CLSS perfectly complements the hydraulic servocontrols, which are, by far, the easiest to use compared to previous models, and allow for extremely precise manoeuvres," Carl says.

Maintenance is also made easy on the new PC25MR-5, with a fully opening engine door and side cover making service access simple.

The PC25MR-5 comes standard with Komtrax™, our advanced wireless monitoring system. "With Komtrax, owners and operators can effortlessly track machine performance, stay informed about equipment status, and optimise efficiency, ultimately saving time and increasing profitability.

"With our extensive branch network, operators will have the service and support they need to keep the PC25MR-5 working efficiently, no matter where your jobsite may be located."

Pictured: The PC25 arrives in Australia, delivering the perfect blend of power and precision

HD605-10 dump truck lands on Australian shores

Our new HD605-10 rigid dump truck is now available in Australia, with the model focused on maximising productivity and minimising operational costs for quarry sites.

The HD605-10 boasts enhanced engine power and torque, while saving fuel thanks to a new 610kW Stage V class-leading engine, and three selectable modes to match the application – economy, economy light and power. A new high-efficiency cooling system and lightweight body option also ensures the machine uses fuel efficiently, ultimately reducing operating costs.

Nick Vrontas, National Business Manager for Quarries says the dump truck builds on the platform of the previous HD605-8, whilst improving performance and productivity.

"Our development teams have prioritised customer needs to deliver a machine that not only builds on the reliability of its predecessor but also introduces significant performance enhancements," Nick says.

These enhancements include increased power by over 5%, increased cooling performance, expanded load capacity up to 64 tonnes with a 43m³ body, improved frame durability, allowing for a 10/10/20 overload policy, enhanced operator guidance systems including our Smart Quarry Site system and improved fuel efficiency.

"Smart Quarry Site is an innovative feet management solution specifically tailored for quarry sites, and focuses on improving site management, optimising production, machine health monitoring, proactive maintenance and enhancing safety on quarry and large civil construction projects. It gives real-time overviews of machine movements and material handling, helping operators and quarry site managers make informed decisions swiftly and accurately," Nick says.

The HD605-10 also has the smallest turning radius in its class, providing sites the ability to utilise narrower benches and switchbacks.

"Operator comfort was also not overlooked by our developers, with hill start assist, cruise control and other new features, which make driving this truck a pleasure for any operator," Nick says.

The launch of the HD605-10 underscores our commitment to innovation, efficiency, and safety in the quarry sector, offering customers a reliable and sustainable solution for their heavy-duty operations.

Pictured: The HD605-10 boasts enhanced engine power and torque, while saving fuel.

A tried and tested partnership between **SNK Group** and **Komatsu**

A flexible fleet of new and used equipment and a relationship built on trust and reliability is behind a successful partnership between SNK Group and Komatsu.

SNK Group is a second-generation family business based in Eraring, between the Central Coast and Newcastle in NSW. They focus on projects across bulk and detailed earthworks, mining, site rehabilitation, municipal and contract crushing throughout the Hunter region.

Lee Kenworthy took over as Managing Director from his father Stuart six years ago, and says for their wide range of projects, they need a machinery fleet that, they need a machinery fleet that is versatile and flexible enough to meet their changing needs. meet changing needs. A mix of new, used and hire equipment hits the sweet spot.

"As our projects can include anything from open cut mines to crushing and screening on quarry sites, and mining and power station dam and road construction, we need a fleet of machines that can really tackle any job and is available for work when we need it.

"We currently have around 30 pieces of Komatsu equipment in our fleet, both new and used, which includes excavators, dozers and dump trucks. During Covid, we all saw a lack of availability in new equipment because of the supply chain impacts, so we turned to adding more used pieces to our fleet, as there were more available and at a competitive price," Lee says.

"The Komatsu team worked with me on what equipment we needed, or what gaps we needed to fill, and helped source those used pieces. They were reliable, flexible, and priced well for us. I can't fault their customer service."

Lee adds that the strong partnership has led to them working with Komatsu on trials for their suite of technology solutions for excavators and dozers.

"We've been lucky enough to work with the team on different trials of the intelligent machine control (iMC) technology, so they can stress test it in real environments before rolling out to customers. It's been good for us too as we've now got mostly iMC machines and have also been able to pilot their other products in the Smart Construction and Smart Quarry Site range, which has seen our productivity go through the roof.

"The Komatsu machines are great all-rounders. They're productive and reliable and the back up and support from the team is second to none. The partnership we've built with them to not only grow our fleet but grow our business has been invaluable," Lee says.

Pictured: SNK Group's flexible fleet of both new and used Komatsu equipment allows them to tackle diverse projects — from open-cut mines to quarry sites — while maintaining productivity and cost-effectiveness.



Pictured: Tequa Plumbing and Civil, a Gippsland leader in plumbing, civil, and construction projects, has relied on Komatsu machinery for nearly 50 years.



Reliability, productivity and support key for **Tequa and Komatsu** partnership



Inset: Tequa's fleet of 12 Komatsu excavators enables them to tackle diverse projects—from domestic plumbing maintenance to large-scale utility works—thanks to their reliability and efficiency.

For nearly 50 years, Tequa Plumbing and Civil has been a leader in the Gippsland region for plumbing, civil and construction projects. With strong family roots in the area, their business has developed and expanded into a number of sectors to support their growing client base and development of their team members. To underpin their expansion, they've found Komatsu machinery and to underpin their expansion they've found Komatsu machinery as a partner who continues to deliver no matter the size and scale of their projects.

Tequa started as a small plumbing business, but Managing Director Daniel Smolenaars says over the years the business added a strong civil construction arm as well.

"We witnessed a number of opportunities for us to adapt, so it was a natural shift with the growth of our clients. We now take on not only plumbing projects, but also a large volume of civil construction, sewerage, water infrastructure and electrical utility works. This allows us to be a one-stop shop and provide an end-to-end solution for our clients. Our work can range anywhere from small domestic plumbing maintenance to utilities works and large land development projects," he says.

Tequa's relationship with Komatsu dates back to 2003. The partnership started with a single machine purchase and has evolved to now have 12 Komatsu excavators in their fleet, including three purchased in the past 12 months.

"Komatsu is a great cultural fit for us, and the machines are undeniably reliable. Their aftersales support is second to none, and as we've grown, they've been with

us. Our relationship has shifted from Komatsu just being our equipment supplier, to a strategic partner," Daniel says.

Tequa's Komatsu fleet includes smaller PC18 excavators, perfect for domestic work in areas with limited access thanks to their compact size and tight tail swing, mid-sized PC45, PC88 and PC138 excavators that are robust enough to support their street infrastructure and remote works. Their larger, durable PC200, PC288, PC300 and PC360 machines are suited for deep earthworks, sewer excavations and large-scale utility works.

To help service their expansive fleet, Tequa work with their local Gippsland Komatsu team and utilise the Komtrax remote monitoring system.

"The technology on these machines has helped maximise machine productivity whilst simultaneously reducing our downtime. Proactively using the Komtrax program and reviewing the reports allows us to plan service requirements in advance. This information coupled with the talented local service team has been great in keeping our operations and projects running.

"The latest PC360 addition to our fleet has the added benefit of integrated intelligent machine control (iMC). The investment in this technology will help support our team in the delivery of site work along with strengthening the accuracy of pipe installation on our development projects." Daniel says.

"I know that if we continue to expand, Komatsu will be there with us. We are tried and tested Komatsu loyalists."



Pictured: Celebrating the renewal of our partnership with Endeavour Foundation

Partnership provides employment opportunities for disability sector

We're continuing our work towards reducing our environmental footprint, while helping to provide jobs for people with disability through the renewal of our partnership with disability service leader Endeavour Foundation.

Endeavour Foundation is an independent, for-purpose organisation that supports people with disabilities through independent living or other forms of accommodation, community initiatives and employment opportunities.

The partnership between Komatsu and Endeavour Foundation focuses on providing employment opportunities within Komatsu's Oil Wear Analysis (KOWA) area. Supported employees in the program clean the 100% recycled plastic cannisters so they can be reused up to six times.

Russell Hodson, Komatsu Australia's Executive General Manager - Supply Chain, says we've been working with Endeavour Foundation since 2021, and are excited to continue the partnership for another three years.

"We've been able to not only offer meaningful employment to a number of people, but with more than 30% of Komatsu's plastic packaging waste generated through our KOWA bottles, this program and partnership also means we can significantly reduce the volume of plastic packaging waste that we are sending to landfill," he says.

"As a large, global company, we are always looking at ways we can use our presence to bring about some good in the world. This partnership is just one of the ways we are focusing on our ESG principles - it helps us reduce our environmental footprint, while also providing some meaningful employment to people with disabilities - and has proved to be such an important part of our overall supply chain in the KOWA division.

"Since we began our relationship in 2021, together we have recycled over 450,000 KOWA bottles that has prevented 12,000kg of waste going to landfill," Russell says.

Shannon Foley, Endeavour Foundation's Executive General Manager - Work, says access to employment opportunities is an important goal for many people with disabilities.

"Meaningful employment is valuable to everyone, and we're proud to play our part by helping to create roles for people with disability. We're looking forward to continuing to work together with Komatsu on this valuable initiative and seeing what other future opportunities we can create," Shannon said.

Komatsu and Rio Tinto celebrate 300th AHS delivery

Pictured: Celebrating a milestone: The 300th Autonomous Haulage System (AHS) Truck delivered to Rio Tinto, marking a new chapter in innovation and efficiency in mining operations.



Komatsu and Rio Tinto have reached a historic milestone, with Rio Tinto's Pilbara operations in Western Australia accepting delivery of their 300th autonomous haulage system (AHS) truck in August.

Komatsu and Rio Tinto initially signed a Memorandum of Understanding in 2011 to deploy 150 AHS trucks to the Rio Tinto site, and 13 years later the partnership is still strong with both companies looking to accelerate the pace of mining automation.

Garry Povah, Komatsu Australia's General Manager - Mining Automation says this milestone gives both organisations the opportunity to reflect on the success of this groundbreaking partnership.

"We've led the industry in mining automation since 2008, when we commenced the Rio Tinto trial. We delivered the first five AHS trucks to Rio mine sites in Australia in 2011, and it's incredible to see how much the business has embraced this technology over the years, helping to make their mines safe, and also highly productive.

"AHS trucks are a crucial solution to both mine safety and addressing labour shortages in the sector. By removing human operators from potentially hazardous environments, AHS trucks significantly reduce the risk of accident and injury, and while enabling continuous operation that considerably impacts site productivity," Garry says.

"The AHS fleet at Rio Tinto sites have completed 8.9 million operating hours and have moved over 4.8 billion tonnes of material - all while improving their sites effective utilisation (EU%) by 15% - a remarkable feat."

Pictured: Rio Tinto's AHS fleet has completed 8.9 million operating hours and has moved over 4.8 billion tonnes of material - all while improving their sites effective utilisation (EU%) by 15%.



Currently, the 300 AHS trucks are spread across 10 of Rio Tinto's Australian mine sites, and contribute to approximately 80% of their daily production capacity.

Jamie Sanders, Rio Tinto's Global Head of Procurement, says "This significant milestone is an excellent example of the partnership approach that Rio Tinto takes with its suppliers.

"Komatsu is a fantastic partner that has helped us improve our operations from a health and safety, and efficiency perspective. From the initial trial in 2008 to the work we do with Komatsu today, they have played a major role in helping us accelerate the automation of our mining processes. We look forward to continuing our collaboration into the future," Jamie says.

The 300th delivery was marked with a special 'Daruma doll' ceremony, a Japanese ritual where one eye of the doll is painted to symbolise the setting of a goal and the beginning of a journey. Once the goal is successfully achieved, the second eye is painted.

"The Daruma doll ceremony is symbolic of perseverance, determination, and achievement. We held the initial ceremony when the MoU was signed in 2011, and it was very special to be able to celebrate the achievement of our partnership this year with the painting of the other eye. It gave us a moment to not only reflect on how much has been achieved, but also to look towards the future as we continue to partner together on sustainable solutions for our industry," Garry says.

Pictured: Max Moriyama, Komatsu and Jamie Sanders, Rio Tinto with their teams at the Daruma doll ceremony, a special Japanese ritual, to celebrate the 300th delivery.



930E: pioneering the future of mining in Australia

In 2001, a giant arrived on the shores of Australia, forever changing the landscape of open-cut mining operations. The Komatsu 930E electric drive dump truck established itself as a market leader in ultra class trucks above 290 tonnes – serving leading mining customers across Australia and around the globe.

The 930E-2 was our response to market demand for a reliable ultra class haul truck that could handle the vast and varied terrain of the Australian mining landscape. Jason Arthur, National Manager - Mining Products, says its introduction was considered 'disruptive technology' 20 years ago when it was first introduced.

"Australia's mining industry has always been at the forefront of embracing innovative solutions, and our customers were looking for flexibility and agility in mine planning. The 930E-2 model provided that in spades. It allowed contractors to move beyond the 240 tonne class trucks and compete effectively in a market where cost per tonne and labour costs are critical factors."

Immediate impact

The 930E-2's simple layout, low maintenance requirements and unmatched reliability made it a favourite among owners. But it was the truck's ability to match multiple excavator and shovel classes that set it apart.

"The 930E-2 serviced the coal and iron ore markets, initially offering a solution for bulk overburden material movement. Its compatibility with large 600-tonne excavators made it a perfect match for Australia's east coast open-cut mining operations, which has a strong preference for haul trucks above 240 tonnes," Jason says.

Jason adds the benefits to mine sites have been significant. The 930E-2 was initially introduced with 16 units split across two fleets in the Bowen Basin region of QLD. An additional fleet arrived in the Hunter Valley mining region about four years later.

"Operators and maintenance staff had to adapt to the electric drive, as it was a departure from the traditional mechanical drive trucks they were used in this class. It required a significant change management process on many mine sites, but the simple machine layout, reliability and long-term fleet performance eventually won operators and maintenance staff over."

Still the leader of the pack

Today, the population has grown to over 500 active units operating in Australia, including some of the first introduced models with over 100,000 operational hours. Jason says the most recent model release, the 930E-5, continues to offer the flexibility and lowest cost per tonne that customers have come to rely on.

"We've reduced base truck sound emissions, improved operator comfort and safety, and significantly cut engine particulate matter emissions. Our enduring robust frame design is complemented by Tier 4 emission engine options and asset health data acquisition capabilities mean we have a product that is futureproofed for years to come, providing our customers with the mining assets they need to keep their sites productive and efficient," he says.

"The model also delivers low fluid consumption and reduced lubricant waste costs, which is a testament to Komatsu's ongoing commitment to sustainability without impacting productivity."

The truck also features a factory-engineered and supported sound kit option targeting less than 113dBA levels, ensuring a quieter operation. Maintenance has been simplified with advancements in AC drive technology. "The reduced maintenance needs, coupled with remote diagnostic and asset health monitoring packages available through Komatsu, ensure that our trucks are always ready for the task at hand," Jason says.

The current 930E-5 model offers up to 5% more fuel efficiency than the previous model, a 3% gain in the drive system efficiency due to less parasitic loads plus a higher target payload.

"The 930E has set the standard for ultra class trucks in the mining sector. It paved the way for the next generation of mining equipment, and we're proud to have been at the helm of this transformation, and continuing now to deliver reliable, productive machines for our mining customers."



Pictured: The 930E electric drive dump truck, with over 500 active units in Australia, remains a leader in ultra-class trucks. The latest model, the 930E-5, combines reliability, improved environmental features, and enhanced fuel efficiency for mining customers.

Pictured: The 930E-2, introduced in 2001, revolutionised open-cut mining operations. As an ultra-class haul truck, it provided flexibility, agility, and reliability, allowing contractors to move beyond traditional tonnage limits.





Youth program to build **STEM** skills for heavy industries

To celebrate National Skills Week in August, we launched our Youth Program, which will help.

The program targets school and university students and recent school leavers and will include initiatives like promoting STEM directly through schools, technical workshops and seminars tailored to students and educators, work experience and placements throughout Komatsu and partnering with educational organisations to help develop curriculums and hands-on learning experiences to raise awareness of the roles and opportunities available.

Zara Carey, our General Manager for People Experience, says the program will help prepare the next generation of industry leaders with the skills they need for a future in heavy equipment or mining.

"Often people think the only jobs available in heavy industries are for mechanics or service technicians, but as our sector embraces more technology and innovative solutions, our workforce is shifting, too. We're seeing a stronger focus on STEM opportunities, and we want to demonstrate this variety of career options available to the youth of today," she says.

"Komatsu is a unique workplace as we offer multiple pathways for employment. You might start in a hands-on role, but often can shift sideways or upwards to a more managerial or technical role, such as analytics engineering, data science or software development. This is what we want our youth program to promote, that there are different opportunities out there that school leavers might not know of, and Komatsu could just be the place for you."



Pictured: Empowering tomorrow's Leaders with the Launch of our Youth Program

To mark the launch of the program and the start of National Skills Week, we have partnered with educational organisation STEM Punks to deliver a workshop for students in years 7-9 where they got to learn about autonomous vehicles and the data and technology that drives them, testing it in real time with simulations and challenges.

"We started and ended National Skills Week with these two workshops at our Innovation Hub in Brisbane. The students got to learn about sensor systems, wireless communication, cloud data, and our intelligent machine control (IMC) program, and how to code and apply these new skills to control a robot platform.

"We're excited to offer this program in partnership with STEM Punks, as we look to support a future workforce equipped with the technology and skills they need to progress in their careers," Zara says.

Invest in **yourself** with a career at Komatsu

Have you ever considered a career at Komatsu? We have hundreds of job vacancies right across the country, and a role at Komatsu can come with significant opportunities for career progression, no matter where you start from.

We put a big focus on supporting our employees with where they want to take their career. Many of the skills learnt on the job can be transferred to other roles, and we have structures in place that focus on not only upwards advancement for employees, but sideways as well.

Mel Morrison, Executive General Manager, People and Culture says she believes people will join a company for a job that pays well, offers good conditions, and offers some opportunities to learn new skills, but the best employers want to do more than just get people through the door.

"We want our people to feel truly valued, to see real rewards for their commitment and to be able to achieve their goals both in and outside of work," she says. "We want people to feel like they can bring their whole selves to work."

"We've put a strong focus on what really makes for a good workplace, from the basic elements like great facilities to addressing some of the less visible challenges, like creating career pathways for women and other

underrepresented groups, giving our people time to do the things that matter to them, and walking our talk on topics like flexible working, bullying, and all the other things that can make the difference between a great day at work and one that is not so great," Mel says.

Mel adds that Komatsu also puts a big focus on supporting our employees with where they want to take their career. "Many of the skills learnt on the job at Komatsu can be transferred to other roles, and we have structures in place that focus on not only upwards advancement for employees, but sideways as well."

"From leadership and management skills to operator skill proficiency development or customised technical training, the skill you learn and hone on the job can be used across many departments. The variety of options available once you begin at Komatsu is endless, and a role here is not just a job, but an investment in your future career," Mel says.

Komatsu **employee** benefits

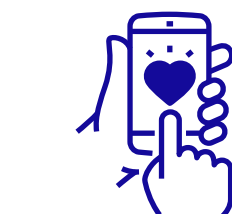


16 weeks of paid **primary carer** parental leave and **4 weeks** of **bonding leave** for secondary carers



Recognition, awards, flexibility, further education studies and internal career development

Career



Corporate discount with Bupa, Total Wellbeing Solution with LifeWorks

Health

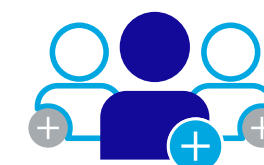
Financial
Company funded **Income Protection Insurance**



Flexibility
FIFO and **DIDO** options, Hybrid **work\office** arrangements, **job share** opportunities



Travel
Discounts with **Qantas, Crown, IHG** and **travel agents**



Referral Program

Earn up to **\$6,500*** for successfully referring an employee to Komatsu (Terms apply)

Simplify Your **Fleet Management** with Komatsu's **myFleet** Platform

As we celebrate the one-year milestone of our myFleet platform, we at Komatsu are thrilled to see how it has transformed the way you manage your heavy equipment fleets. Designed with your needs in mind, myFleet brings all your machine data into a single, easy-to-use platform, eliminating the need to navigate multiple systems and streamlining your fleet management process.

We know that managing a fleet of heavy equipment can be complex, especially when information is spread across multiple platforms. That's why we developed myFleet – to simplify your experience by centralising all machine-related data in one place. This commitment to making fleet management easier led to the launch of myFleet, a one-stop solution that helps you manage your operations more efficiently.

At Komatsu, our goal is to support you with the best tools and technologies. As the National Manager for ICT and Fleet Management, Steve Williams oversees many of the platforms that help you get the most out of your Komatsu equipment. Among these platforms is Komtrax, our remote monitoring system that comes free with all new and Komatsu premium used equipment.

Steve and his team specialise in data analytics, using insights from your machines to help you optimise both operations and machine performance. "We are always working on new platforms and tools to support you, and myFleet is one of our latest innovations," says Steve. "Available at no cost to all Komatsu aftermarket account customers, myFleet makes fleet management easier and more effective."

Initially, myFleet was an internal tool used by our service technicians to manage onsite machine servicing. However, as they began sharing the insights from myFleet with you, our customers, the demand to access the system directly grew rapidly.

"Since launching myFleet, the feedback we've received from you has been incredibly positive," says Steve. "You've told us how much easier it is to have all your machinery-related information in one place. Many of you have reported improvements in efficiency, cost savings, reduced downtime, and smoother operations overall."

The myFleet platform gives you a comprehensive view of your fleet, including details on Komtrax location, operational trends, and fuel consumption. It also provides service reports that include any defects identified during maintenance, the latest fluid sample results with recommendations, and undercarriage inspections we've completed on your machines.

"By consolidating this information into one platform, myFleet gives you a clear understanding of your fleet's past and future activities," Steve explains. "You'll receive alerts for upcoming routine and periodic maintenance, helping you plan ahead and avoid surprises."

For example, if one of your machines is due for a 500-hour service, myFleet will alert you in advance. This gives you plenty of time to either order the necessary parts for a self-service or schedule a service appointment with us, directly through the platform.

myFleet is especially valuable when it comes to minimising downtime. With visibility into upcoming service schedules, based on your machine's current usage, myFleet helps you align maintenance with your project plans, keeping your operations running smoothly.

"We know how frustrating it is to be in the middle of a job and realise that a machine needs servicing," says Steve. "With myFleet, you can plan ahead to keep your fleet and projects on track."

myFleet also helps you monitor and track machine health by collecting data from platforms like Komtrax. This data can alert you to potential issues, such as machine abnormalities or defects identified during services, allowing you to address them before they lead to costly downtime.

In an industry where productivity challenges persist, myFleet provides you with valuable insights into your machine's historical data, helping you find opportunities for improvement. For instance, Komatsu's Payload Meter technology – compatible with select machines – measures the weight of each bucketload and tracks machine movements. myFleet integrates this data into its dashboard, offering insights into idle time and operational workload, so you can optimise machine use and boost productivity.

With rising living costs and fuel prices, the data provided by myFleet is also a valuable asset for cost reduction. "One of the features we offer through myFleet is benchmarking," says Steve. "This allows you to compare your machine's performance and workload against others in the Komatsu community, helping you see where you stand and where there's room for improvement."

As sustainability becomes more important in our industry, many of you are now monitoring your carbon emissions, especially those from fuel usage. myFleet's dashboard gives you access to detailed data on both fuel consumption and the carbon emissions produced by each machine.

"The ability to review and analyse fuel consumption within myFleet is a powerful tool in your efforts to reduce emissions," Steve notes.

Today, myFleet has become an indispensable tool for Komatsu machine owners. It brings together telemetry and inspection data from your machines into one place, providing significant benefits whether you're a small, family-owned business with a few machines or a large-scale contractor with a fleet of 100 or more.

"We are committed to continuously developing myFleet, adding new features and functions to support you as you grow your business," says Steve.

Gone are the days of juggling multiple platforms to manage your fleet. With myFleet, Komatsu is pioneering a new era of simplicity and efficiency in fleet management, and we're excited to be on this journey with you.



myFleet

Fleet management made easy

Simplify the way you access and view your machine data and reports

- View all machine data in one location
- Visualise and manage your fleet of machinery
- Overall machine health indicator
- Request services from Komatsu
- Easily accessible via myKomatsu
- Access myFleet anywhere, anytime you have an internet connection

For more
information on
myFleet scan the
QR code





Pictured: Our Live your Dream grant recipients are making a lasting impacting in their local communities

Employees ready to give back

Our 2024 Live your Dream recipients have been announced, with 10 employees from Australia and New Caledonia presented with a \$10,000 grant to go towards their nominated not-for-profit organisation or charity.

The Live Your Dream program has been running since 2017 and gives Komatsu employees the opportunity to contribute to organisations in their local community or wider society that are close to their hearts.

Mel Morrison, Executive General Manager, People and Culture says the program is one that is very popular among our cohort, as it allows them to give back in many ways.

"The Live Your Dream program consistently earns great feedback from our people and the organisations we give back to. This year we had 32 nominations, which shows how keen our people are to get involved and make a difference in their community. It was hard to narrow it down to just 10 recipients," she says.

"This initiative is a source of great pride for us, as it provides our people with a unique chance to give back in a meaningful way that they typically might not be able to undertake on their own, and it allows us to demonstrate what a great workplace Komatsu is and how we are constantly looking at ways we can build value with our people," Mel says.

The 10 Live Your Dream recipients for 2024 deliver their grants over the next year.



Name	Title	Location	Supporting
Lee Riley	Electrician (HV)	Gladstone, Queensland	Brainchild Foundation
Sandra Cleere	Lab Supervisor and Administrator	Thornton, New South Wales	We Care Connect
Kelly-Anne Bartlett			
Scott Berry	Business Manager Construction Excavators	Fairfield, New South Wales	Lifestart
Elizabeth Moreno	Customer Support Sales Representative	Mt Isa, Queensland	Coastal Dry Tropics Landcare
Nicole Truran	Branch Manager	Geraldton, Western Australia	Aristocrat 2
Alana Romano	Field Service Technician	Cairns, Queensland	KickOn
Valerie Bensimo	Commercial Manager	Noumea, New Caledonia	Foyer Bethanie
Brianna Rennie	People Experience Partner and Electrical	Welshpool, Western Australia	Zero2Hero
Kieron Hinsley	Apprentice Supervisor		
Kimberly Ward	Regional Estimator	Fairfield, New South Wales	Friends with Dignity
Diana Easter	Workshop Supervisor	Mackay, Queensland	Ronald McDonald House Charities North Australia



Komatsu employees take a trek to raise awareness for mental health

The latest data from the Australian Bureau of Statistics highlights that nearly 40% of young Australians aged 16 to 24 - which is over one million individuals - have experienced a mental health disorder in the past year.

This shocking statistic and their pull to make a difference led Komatsu employees Brianna Rennie and Kieron Hinsley to apply for Komatsu's Live your Dream program, which provides selected employees with a grant of \$10,000 to support a non-for-profit charity of their choice. This program encourages staff to pursue their passions and make a positive impact in their communities.

The duo selected Zero2Hero, an organisation that is dedicated to educating and empowering young individuals to become mental health advocates and help the prevention of suicide in Australia.

As part of their dream, Brianna and Kieron participated in the Cape2CapeTrek, a five-day, 130km trek run by Zero2Hero between Western Australia's Cape Leeuwin Lighthouse and Cape Naturaliste Lighthouse. They decided to partake in the trek as they wanted to raise awareness for mental health and raise funds for Zero2Hero and the activities they run.

"We learnt a lot about ourselves and each other on the trek, as well as the amazing charity that Zero2Hero is in supporting young people in Australia. This was a big challenge both mentally and physically, but such a rewarding experience," they said.

Brianna, Kieron and their fellow trekkers successfully raised more than \$70,000 for Zero2Hero, to directly support their youth programs.

The Live your Dream grant also provided the opportunity for 25 school students to attend the In Your Head Mental Health Forum, which is run by Zero2Hero, and provides young people and teachers with a greater understanding of adolescent mental health and practical skills to support their own wellbeing.

"We are incredibly grateful for Komatsu's kind consideration, support and effort toward our cause. Brianna and Kieron represented themselves and Komatsu incredibly well and we are very thankful for them both playing an amazing role as supporters of Zero2Hero," said Oscar Wharton, Partnerships Manager from Zero2Hero.

We were born out of necessity.
We didn't hire people to build machines.
We built machines so that we could hire people.

It had to work.
Because our town needed work.
And the name of that town, was Komatsu.

Soon we were in towns all over the world.
Everywhere work was needed.
In construction, in mining and forestry.
Because necessity is the mother of invention.
And innovation is how society overcomes challenges.

Today, our machines may be bigger.
They may be stronger and more precise.
But we still build them to answer the needs of society.

Because there is still work to be done.
Big challenges, requiring big machines.
Gentle giants.



KOMATSU
Creating value together

Empowering a sustainable future



Find the eco-terms below:

Recycle

Clean

Wind

Reuse

River

Geothermal

Reduce

Energy

Carbon

Conserve

Renewable

Emissions

Ocean

Solar

Net zero

Mining



Demining



Excavate



Explore



We build machines to answer the needs of society.
We call them gentle giants.

Gentle giants shaping our world and beyond. Harnessing our collective expertise
to go further, we stay true to our brand promise: Creating value together.

Learn more at [Explore.Komatsu](https://www.komatsu.com/en)

KOMATSU

KOMATSU

Creating value together

Komatsu designed and built the transmissions that won the 1997 F1 World Championship

Did *you* know



After seeing a Komatsu Wheel Loader operating in a paddock next to a race track, Sir Frank Williams was so impressed that he approached Komatsu to help design and manufacture spiral bevel gear primary drives for the FW11 Williams Honda F1 car, which went on to win the 1987 F1 World Championship in the hands of Nelson Piquet.

Komatsu also supplied straight cut final drive gears for the FW12 Williams F1 car in 1988-9, driven by Nigel Mansell and Martin Brundle.

Komatsu went on to design, manufacture and supply the gearbox in the famous FW19 Williams F1 car in 1997. The 6-speed transverse sequential semi-automatic transmission was mated to a 3.0 litre V10 capable of 567kW at 17,000 RPM. The Komatsu transmission helped propel Williams to an extremely successful season, with 11 pole positions, 15 podiums and 8 wins in the year.

Ultimately, the Williams FW19 with Komatsu's gearbox achieved a rare Triple Crown with Williams drivers Jacques Villeneuve & Heinz-Harald Frentzen coming in first and second place in the championship, with Williams winning the constructors title.

