



**PARTS**

# KOMATSU GENUINE HOSES

## Making the right connection

Using genuine hydraulic hose is the best way to maintain the reliability of any Komatsu machine – minimizing downtime, maximizing profitability and increasing the operators safety.



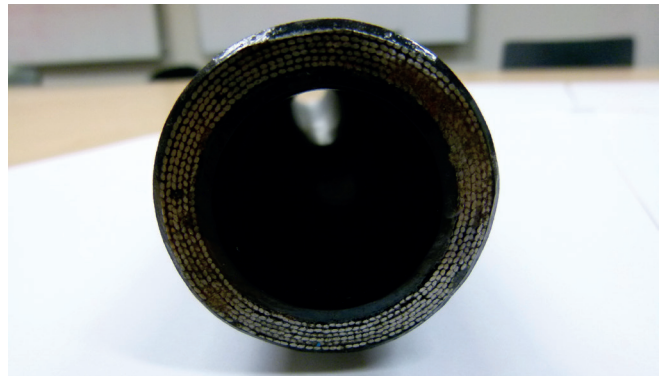
**KOMATSU**  
*Driven by your success*

# KOMATSU GENUINE HOSES



## HOSE MATERIAL

Komatsu Engineering Standard (KES) genuine hoses features a special outer-covering which increases the abrasion resistance of the hose. The engineering design and materials used in the construction of Komatsu genuine hose, results in a reduced minimum bend radii which allows for an increase in the hoses flexibility. Evenly spaced steel wire within the hose wall, allows for stronger hose re-enforcement and adds to the hoses durability.



## WHY CHOOSE KOMATSU GENUINE HOSES?

Komatsu Genuine Hoses are engineered to a higher engineering specification than AS/DIN hose assemblies offered in the Australian market. Komatsu Genuine Hoses also feature superior abrasion resistance and Improved minimum bend radius equates to increased flexibility.



# KES – KOMATSU ENGINEERING STANDARD

## FITTINGS

When a Komatsu Genuine Hose is manufactured the material of selection is determined on the application of the hose, some are specifically hardened to suit high impact/vibration applications. During manufacture the Inertia welding technique used in making KES fitting which provides 100% contact area for butt welding and prevents gas porosity, segregation or slag inclusion which could result in premature failure. Komatsu Genuine Hoses feature higher strength fittings to prevent stripping threads and/or cracking nuts when over-tightened



## ASSEMBLY PROCESS

All assemblies have new replacement O-ring included.



Specialised cleaning techniques to ensure the hose assembly is contaminant-free and all assemblies are individually bagged and capped to prevent damage and contamination of the assembly. All assemblies are clearly tagged to make re-ordering your hose simple and easy. Komatsu Engineering Standard (KES) assembly techniques ensures traceability of products and components that are used in the assembly process.



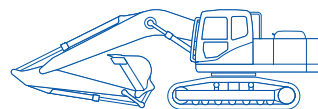
Using Genuine Komatsu Hydraulic Hose will minimize the risk of machine down time due to early hose failure. Take advantage of a machine hose audit by a trained Komatsu Technician, to capture hoses before they fail.



## PARTS

### FOR MORE INFORMATION:

**Australia-** Ph: 1300 566 287 | Web: [www.komatsu.com.au](http://www.komatsu.com.au)  
**New Zealand-** Ph: 0800 566 2878 | Web: [www.komatsu.co.nz](http://www.komatsu.co.nz)  
**New Caledonia-** Ph: 24 25 10



# KOMATSU

*Driven by your success*