



KOMATSU

Discover

Smart Solutions K-RTK

Real-time precision without limits.

High-precision RTK where you need it

Smart Solutions K-RTK delivers unparalleled benefits to GNSS equipment requiring high-accuracy RTK corrections to support various earthmoving applications. By providing real-time, centimetre-level accurate RTK corrections through the mobile data network, it eliminates the need for individual GNSS base stations on site, reducing setup time and equipment costs to get you shaping the earth sooner.



**Image may not represent actual K-RTK coverage*

RTK corrections to suit the needs of your project and equipment

- Supports correction methods VRS, iMAX, Nearest Base and Single Base connection.
- Available on all common GNSS hardware devices that support NTRIP such machine control, rovers, RTK-enabled drones, autosteering systems, plus more.

Support for common Formats & Datums

- Common correction formats supported including RTCM3.0, RTCM3.2 MSM and CMR+ are all included as standard.
- Support for both GDA2020 and GDA94 datums.

Unmatched Flexibility & Reliability

- Since corrections are delivered by the mobile data network to equipment, this completely eliminates base station interference, increases coverage and system uptime, and ensures compliance with government communications regulators.

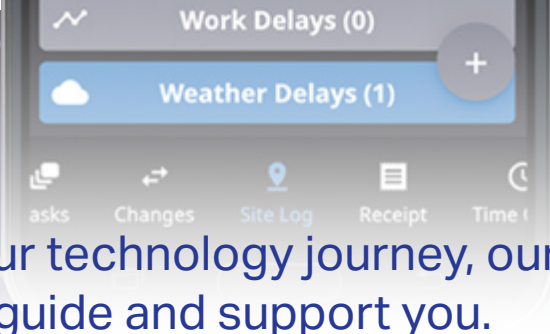
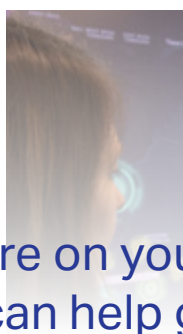
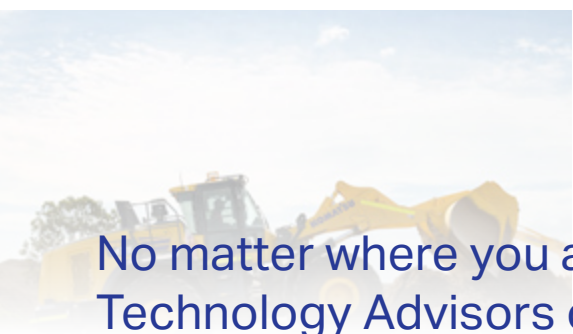
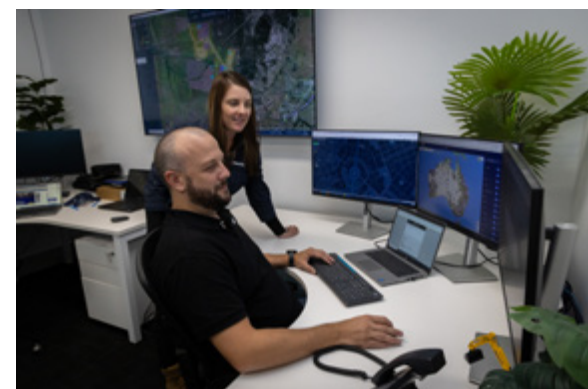
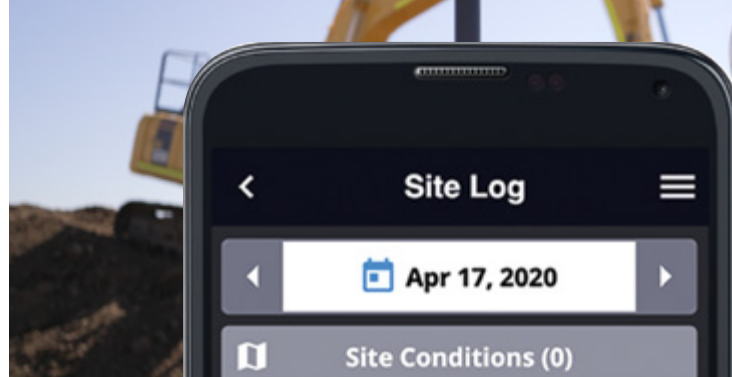
Wide Coverage Area

- With an industry leading coverage area and rapidly expanding network, K-RTK can generally be accessed everywhere that mobile internet connectivity is available.

Trusted support when you need it

- Supported by Komatsu's industry leading technology experts.
- 24/7 365 days per year service monitoring to ensure maximum uptime.





No matter where you are on your technology journey, our Technology Advisors can help guide and support you.

 Learn more about Smart Construction Field by contacting your local Komatsu representative or visit: <https://www.komatsu.com.au/innovation/smart-construction>

For more information:

Australia - Ph: 1300 566 287 | Web: www.komatsu.com.au

New Zealand - Ph: 0800 566 2878 | Web: www.komatsu.co.nz

KOMATSU



©2025 Komatsu Australia Pty Ltd. All rights reserved. Printed in Australia.