

# KOMATSU

## Dual Bushing Track

Suitable for D275A, D375A and D475A machines



# Overview of the dual bushing track

## What is a dual bushing track?

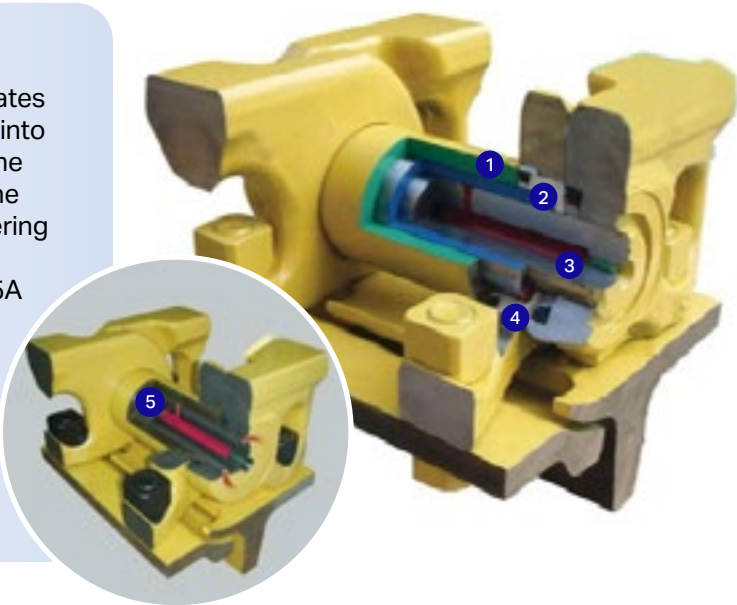
The Komatsu dual bush track is a unique structure that operates an inner and outer bushing. The inner bushing is press fitted into the link, whilst the outer bushing is free and rotates around the pin, which also eliminates the need for pin and bush turns. The dual bushing track is ideal for sandy abrasive conditions offering extended life over a conventional track. The Komatsu dual bush track is currently available for D275A, D375A and D475A machines and is ideally suited for the following applications: Iron Ore Mines, Phosphate Mines, Sand Mines, Coal Mines and Oil Mines.

1. Rotating Bushing (outer bush)

2. Fixed Bushing (inner bush)
3. Pin

4. Collar

5. Current Track



## Key track components



1. All single flange T/Roller
2. Dual bushing track
3. Exclusive segment teeth

## Optional Parts



- Recommended to use on muddy surfaces
- Holes to prevent sand and dirt from accumulating inside the track (available on request)



- Recommended to use if T/Roller wears prematurely
- Wear life of T/Roller was extended by increasing tread O.D

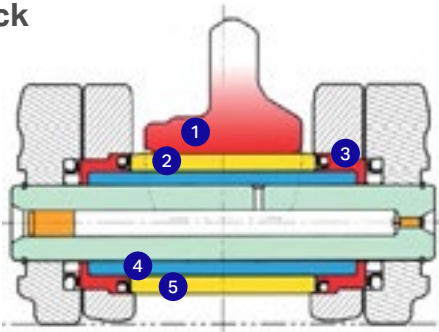


- Recommended to use if C/Roller wears prematurely
- Wear life of C/Roller was extended by increasing tread O.D

# Comparative wear analysis

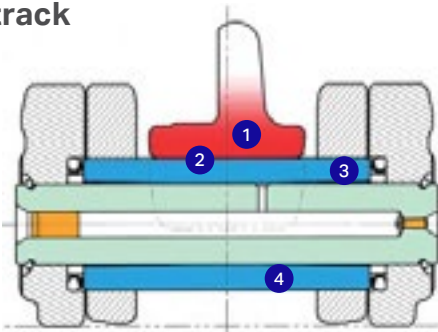
## Dual bushing track

1. Sprocket teeth
2. Minimal wear
3. Double press fit
4. Inner brushing (fixed)
5. Outer brushing (rotating)



## Conventional track

1. Sprocket teeth
2. Wear out area
3. Press fit
4. Bushing (fixed)



## Case study:

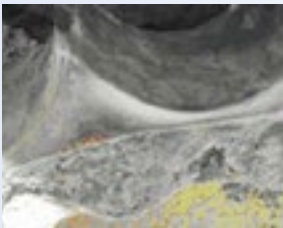
### D275AX-5 dual bush track in the USA

In Florida, USA Komatsu dual bushing track was installed and tested on a D275AX-5, working on a phosphate mine, with extremely abrasive and sandy conditions. After 3500 hours of operation the dual bush track was assessed for results.

#### Current track - At 700 hours operation



**Bushing:**  
Worn. Pin and bush turn required at 700 hours



**Sprocket Teeth:**  
Completely worn

#### Current track - At 700 hours operation



**Bushing:**  
Almost no wear

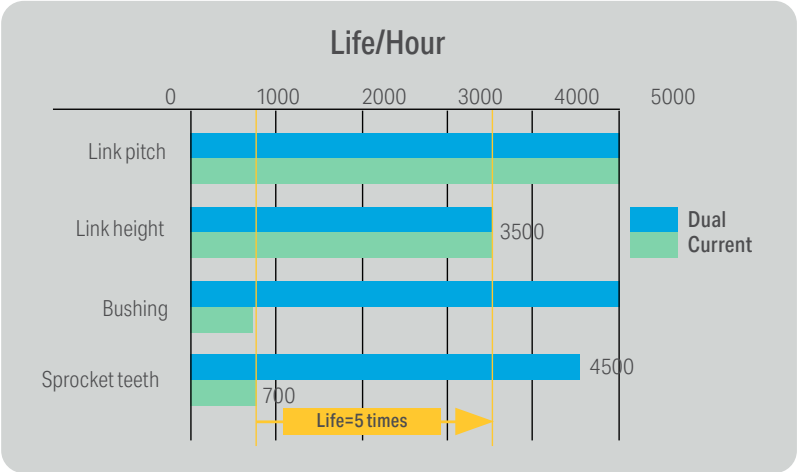


**Sprocket Teeth:**  
Minimal wear visable

## Results:

Dual bush track has lasted five times longer than the standard current track

- Pin and bush turn and sprocket teeth replacement are no longer required during the life of the link chassy.
- Overall results have proven extremely positive; particularly considering the trial took place in extremely abrasive and sandy conditions.







---

## For more information:

**Australia - Ph:** 1300 566 287 | **Web:** [www.komatsu.com.au](http://www.komatsu.com.au)

**New Zealand - Ph:** 0800 566 2878 | **Web:** [www.komatsu.co.nz](http://www.komatsu.co.nz)

**KOMATSU**

